

ENGLISH
TAKE ONE FOR FREE

DEPA-CHIKA and JAPAN-EXCLUSIVE PRODUCTS

JAPANESE DEPARTMENT STORES



Fine goods
from Japan
in vast array



The vast majority of our shops are tax-free. We also have in-store Tax-free counters which can handle enquiries and transactions in several languages. And for an extra charge, we can also offer to deliver your shopping to your hotel, or even an overseas location.



Comprehensive support for our overseas customers

Over the last few years, department store support services for overseas customers have become increasingly comprehensive. Not only do we have bilingual staff and multilingual floor guides, but also "Point and Speak Sheets" for our staff who cannot speak foreign languages. We have come to handle nearly all major credit cards for shopping, and some department stores have even set up currency exchange areas. With us, you don't even need to go to the bank! Pretty convenient, don't you think?

Department store services are basically free

In addition to free fitting rooms (which goes without saying), we have a host of other services which are basically provided free of charge, including shoe-fittings, makeup testing, and food tasters. And if you are choosing your souvenirs, you can even enlist the help of a concierge who will warmly attend to your needs! Our cloakroom services, where you may leave your luggage and purchased items, are another convenient feature. And even in the rare instance that services entail an extra charge, we will take utmost care to inform you in advance.



If you would like free wrapping for your gifts, we can provide that too. We can even add a carefully tied ribbon and a message card.

Top-class products approved even by discerning Japanese customers

Welcome to the land of totally unmarked and unscratched products! The Japanese are said to be the strictest in the world when it comes to product quality. It goes without saying that department stores are lined with reliable products which pass the approval tests set by these highly discerning customers. Quality is a given, which is why, for example, the safety of our food products is given the highest importance. There is something very appealing about the fact that if you buy something from a department store, you need never worry about the quality.



Department stores offer the highest quality goods from both inside and outside Japan. Put simply, if a product fails to convince our buyers (whose sense for quality has only been strengthened by demanding customers), it will never make its way to our shop floor.

Combining clothing, foods and homeware to ensure the whole family can have fun throughout the day

A large number of department stores offer a huge variety of food products on basement floors known as "Depa-Chika." In-store, it is standard to have cosmetics and jewelry on the 1st floor, ladies' shoes and bags on the 2nd floor, and then several floors of ladies' fashion. The upper floors are dedicated to menswear and children's goods, home living, kitchen items and gifts. There will also be an event floor for you to enjoy, while the very top floors with the spectacular view are reserved for restaurants. There's so much to enjoy that you and your family could easily spend an entire day with us!



Mom goes off shopping, dad takes the kids upstairs for some enjoyment, and then everyone meets up on the restaurant floor afterwards. Everyone can have fun in their own way.

Convenient shopping near the train station

A comprehensive rail network running impeccably on time is one of Japan's famed characteristics. But what the Japanese especially like is convenient facilities easily accessible from the train station. Among the most convenient of those facilities are department stores, situated in prime locations which often adjoin the stations themselves. With us, you have a space near to the station with a fantastic product lineup clearly divided among different floors. Not only can you shop easily, but we can even take care of your baggage, meaning that you can confidently walk around all day and never get tired!

INFORMATION

Department stores serve as landmarks at the most important stations, and might well be dubbed "the face of the town." Our Information Desks are ever-ready to greet our customers with a smile!



The Japanese Department Store is a Treasure House of Hospitality



Japanese department stores have become world-famous for their highly considerate form of customer care known as *omotenashi*, or Japanese hospitality. The thinking behind our services revolves around the question: "Just how pleasant an experience can our visitors have?" It is about putting ourselves in the customer's shoes, and ensuring that our services reflect the spirit of carefully considered customer care. If you experience our services first-hand, you will most likely get to know Japan even better!

02 The Japanese Department Store is a Treasure House of Hospitality

04 Enjoy more fun and more bargains! Make the most of the tax-free shopping system!

Guide to Depa-Chika

06 A long lineup of delicious items available only here, only now!

Fantastic Depa-Chika!

08 Hokkaido/ Tohoku Areas

- 10 Marui Imai Sapporo Main Store [丸井今井札幌本店]
- 10 Sapporo Mitsukoshi [札幌三越]
- 11 Daimaru Sapporo [大丸札幌店]
- 11 TOKYU DEPARTMENT STORE SAPPORO STORE [東急百貨店さっぽろ店]
- 12 FUJISAKI [藤崎]

13 Kanto/ Koshinetsu Areas

- 16 Isetan Shinjuku Store [伊勢丹新宿店]
- 17 TAKASHIMAYA SHINJUKU STORE [新宿タカシマヤ]
- 18 Odakyu Department Store Shinjuku [小田急百貨店 新宿店]
- 19 Keio Department Store, Shinjuku [京王百貨店 新宿店]
- 20 MATSUYA GINZA [松屋銀座]
- 21 Nihombashi Mitsukoshi Main Store [日本橋三越本店]
- 22 NIHOMBASHI TAKASHIMAYA S.C. [日本橋高島屋 S.C.]
- 23 Daimaru Tokyo [大丸東京店]
- 23 Matsuzakaya Ueno [松坂屋上野店]
- 24 TOKYU DEPARTMENT STORE TOYOKO STORE [東急百貨店 東横店]
- 24 TOKYU Foodshow EDGE: SHIBUYA SCRAMBLE SQUARE Shops & Restaurants 1F & B2F [東急フードショー エッジ 渋谷スクランブルスクエア ショップ&レストラン1F&B2F]
- 25 TOKYU DEPARTMENT STORE HONTEN (Main Store) [東急百貨店 本店]
- 25 Shibuya Hikarie ShinQs [渋谷ヒカリエ ShinQs]
- 26 SEIBU IKEBUKURO [西武池袋本店]
- 27 Tobu Department Store Ikebukuro [東武百貨店 池袋店]
- 28 TAKASHIMAYA YOKOHAMA STORE [横浜タカシマヤ]
- 29 SOGO YOKOHAMA [そごう横浜店]
- 30 KEISEI Department Store [京成百貨店]
- 30 Maruhiro Department Store Kawagoe [丸広百貨店 川越店]

32 Hokuriku/ Chubu Areas

- 34 Nagoya Sakae Mitsukoshi [名古屋栄三越]
- 35 Matsuzakaya Nagoya [松坂屋名古屋店]
- 35 Matsuzakaya Shizuoka [松坂屋静岡店]
- 36 JR Nagoya Takashimaya [ジェイアール名古屋タカシマヤ]

37 Kansai/ Chugoku Areas

- 40 Kintetsu Department Store Main Store ABENO HARUKAS [近鉄百貨店 あべのハルカス近鉄本店]

- 41 Daimaru Umeda [大丸梅田店]
- 41 Daimaru Shinsaibashi [大丸心斎橋店]
- 42 Hankyu Department Store Umeda Main Store [阪急うめだ本店]
- 43 Hanshin Department Store Umeda Main Store [阪神梅田本店]
- 44 TAKASHIMAYA KYOTO STORE [京都タカシマヤ]
- 45 JR KYOTO ISETAN [ジェイアール京都伊勢丹]
- 45 Daimaru Kyoto [大丸京都店]
- 46 Kintetsu Department Store Nara Store [近鉄百貨店 奈良店]
- 46 Kintetsu Department Store Wakayama [近鉄百貨店 和歌山店]
- 47 Daimaru Kobe [大丸神戸店]
- 47 SOGO HIROSHIMA [そごう広島店]
- 48 OKAYAMA TENMAYA [天満屋岡山本店]
- 48 KURASHIKI TENMAYA [天満屋倉敷店]

49 Kyushu Area

- 51 Hakata Hankyu [博多阪急]
- 52 Iwataya Main Store [若田屋本店]
- 52 Fukuoka Mitsukoshi [福岡三越]

Guide to JP Limited Products

54 Superb items you can only find in Japan Shopping Pleasure!

- 56 Ginza Mitsukoshi [銀座三越]
- 57 Hankyu Men's Tokyo [阪急メンズ東京]
- 58 SEIBU SHIBUYA [西武渋谷店]
- 58 Kintetsu Department Store Main Store ABENO HARUKAS [近鉄百貨店 あべのハルカス近鉄本店]
- 59 TAKASHIMAYA OSAKA STORE [大阪タカシマヤ]
- 60 Hankyu Men's Osaka [阪急メンズ大阪]
- 61 Tsuruya Department Store [鶴屋百貨店]

【Icon Viewpoints】

- English-speaking staff
- Currency exchange
- Specialist advisers
- Stores integrated with restaurants; dining spaces
- Chinese-speaking staff
- Overseas delivery
- Demonstration sales
- Tax-free counter
- Coin lockers; cloakrooms
- Dedicated refrigerated food lockers
- Address
- Tel
- Opening Hours
- Closed
- Access

This information is accurate as of October 2019. Please be aware that the tax-free system may be subject to change.

Enjoy more fun and more bargains! Make the most of the tax-free shopping system!

Department Store Shopping: Convenient and Worry-free!

The Tax-Free System, which allows you to enjoy shopping in Japan, has been reformed to bring you even more benefits! Whether purchasing your most coveted items or souvenirs, you are really going to reap the benefits from tax-free shopping in Japan.

Most department stores operate highly convenient tax-free counters which allow you to complete the tax-free shopping process for items purchased on any floor. Feel free to enjoy a relaxing, high-quality shopping experience!

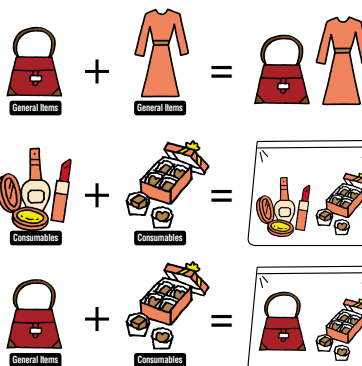


⚠ Tax-Free Shopping: Points of Note

1.

The daily purchase amounts (per person, per store) that qualify for tax-free shopping differ for general items and consumables. For general items (bags, shoes, watches, jewelry, clothes, golf items, craft items, etc.), the tax-free amount is 5,000 yen or above (excluding tax). For consumables (cosmetics, foods, drinks, tobacco, supplements, etc.), the tax-free amount is between 5,000 yen and 500,000 yen (excluding tax). Please remember that items qualify as tax-free **only** on the day of purchase.

However, as a result of reforms to the Tax-Free System made in July 2018, if you designate general items you buy to be treated as consumables (i.e. placed inside a designated bag which you do not open before leaving Japan), you can now – unlike before – combine purchases of general items and consumables in order to reach tax-free shopping thresholds.



Total purchases of at least 5,000 yen will qualify as tax-free

Total purchases between 5,000 and 500,000 yen will qualify as tax-free

Purchases as consumables between 5,000 and 500,000 yen will qualify as tax-free

2.

You will need to show your passport in order to complete the tax-free shopping process. When shopping in Japan, please make sure to bring a passport with a Japan Entry Stamp inside.



3.

Under Japanese law, you must apply for tax-free status on the day of purchase. Items purchased on previous days cannot be included in your tax-free application.



4.



We will provide a designated bag for products designated as consumables. Please do not open the designated bag before leaving Japan. If the bag is found to be opened at customs, you will be made to pay the relevant consumption tax at that time.

5.



Please be aware that you cannot complete the tax-free shopping process on another person's card, even if the cardholder is a member of your family.

 **FAST REFUND**

Quick, convenient
while you shop



Global Blue

SHOP TAX FREE

Fantastic Depa-

Depa-Chika:

6-point checklist

Point 01 Seasonal Height-of-season products

Japan is a country whose four seasons clearly reveal their differences. The first depa-chika charms that spring to mind are the item displays conveying a sense of the season. Starting with the showcase sweets and deli items, depa-chika boast a full lineup of seasonal foods to be enjoyed with all five of your senses.

Point 02 Local Delicious products from across the country

Only in Japan can you find 47 regions displaying a variety of individual climates and natural features. And if you want to relish all those famous local products renowned throughout the country – the ingredients, deli items, confectionery and local sake – look no further than the department stores.

Point 03 Exclusive Items which are only available here

“Exclusive” is a word that draws an immediate reaction from the Japanese. And the institution responsible for sparking the “exclusive” boom was none other than the department store! Depa-chika also proudly offer packaging and product variations unique to particular stores. These exclusive items are well worth coming to see!

Point 04 Fresh Invigorating freshness

It goes without saying that depa-chika are filled with fresh foods including fruits, vegetables, fish and meat. Furthermore, if you become footsore while shopping, why not refresh yourself in the depa-chika by picking up some fresh juice from a nearby stand!

Point 05 Experts Advice from those who know

Depa-chika boast such a rich variety of goods that you may find yourself stuck for which ones to choose. Luckily, a reassuring presence is provided by the array of specialist experts on offer, including concierges, sommeliers and sake masters. There are even “vegetable sommeliers” and “sweets attendants” at your service!

Point 06 Displays Beautiful displays well worth a look

Just as with window shopping, you can have more than enough fun simply by looking around all the various displays within the depa-chika. Fruits arranged like flower shop bouquets and confectionery baked on-the-spot practically implore for their photographs to be taken.



A Kyoto Mini Box bento (1,491 yen) from TAKASHIMAYA KYOTO STORE's Minokichi (p.44)

TOKYU DEPARTMENT STORE SAPPORO STORE's Rokkatei (p.11)



Kintetsu Department Store Wakayama's Liquor Section (p.46)



1. A Caramel Sandwich Walnut Matcha Set (2,916 yen for 10 pieces) from Isetan Shinjuku Store's Nihon Saka SANOAH (p.16) 2. A Yukari Golden Tin Limited Package (1,080 yen per tin of 12) from JR Nagoya Takashimaya's Bankaku Sohondo (p.36) 3. Saito no Kaori (1,275 yen per 20g tin) from TAKASHIMAYA KYOTO STORE's Marukyu Koyama-en (p.44)



Chika!

A long lineup of delicious items
available only here, only now!

Why exactly do “Depa-Chika” enthrall so many visitors? Is it their
delicious foods? Their product lineups? Oh no, that’s certainly not all!
Please make sure to read our checklist of depa-chika charms.



1. SOGO YOKOHAMA's Shinjuku
Takano (p.29) 2. Keio
Department Store Shinjuku's
FOUNDRY (p.19) Photos are for
reference only. The seasonal
products pictured may not be
available at the time of your visit.

Point
04
Fresh



TOKYU DEPARTMENT STORE HONTEN (Main Store)
Japanese and Western Liquor Section (p.25)



Point
05
Experts

Nihombashi Mitsukoshi Main Store's Club Harie (p.21)

Point
06
Displays



Isetan Shinjuku Store Fruits Section (p.16)



Sapporo
SapporoSnowFestival
February



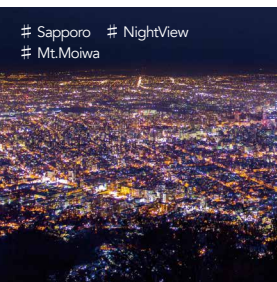
Hokkaido / Tohoku Areas

== 《 Guide to Depa-Chika 》 ==

Hokkaido / Tohoku *Areas*

Hokkaido was originally cultivated in the Meiji Era (1868-1912). Nowadays, Sapporo city has become a sizable metropolis home to 1.96 million people! The night lights rank among the New Three Major Night Views of Japan! Meanwhile, the leading city in the Tohoku region, Sendai, has been bolstered by a planted forest since the days of the great military general Masamune Date, and continues to be known as the "City of the Forest."

Sapporo # NightView
Mt.Moiwa



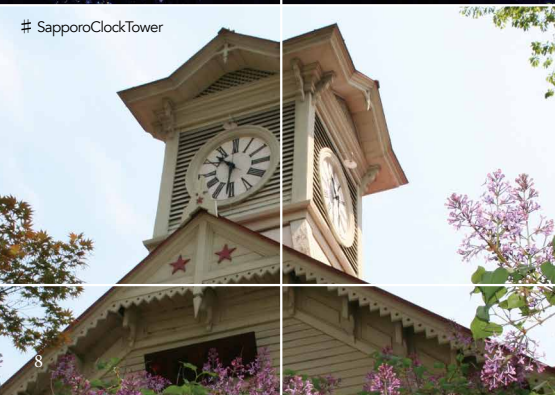
Sapporo
FormerHokkaidoGovernment
OfficeBuilding



Furano
Lavender
July



SapporoClockTower



SendaiTanabata
August



Sendai # ZelkovaTrees
JozenjiStreet

Sapporo Town Map

[Airport Access]

✈ Shin-Chitose Airport

🚗 Rapid Airport Service (approx. 40min)

🚌 Airport Limousine Bus (approx. 70min)

➔ Sapporo Sta.

Yodobashi Camera
Multimedia
Sapporo Store

Daimaru Sapporo
大丸札幌店

• KEIO PLAZA HOTEL SAPPORO

ASTY45

These beautiful red brick constructions are registered as Important Cultural Properties.

Botanic Garden,
Hokkaido University

Hokkaido Government
Former Hokkaido Government Office Building

Kaden
• sumairu kan
YAMADA Sapporo

Let your hair down at the Sapporo Snow Festival and other large-scale seasonal events.

• Sapporo View Hotel Odori Park

Nishi hatchome Sta.

The arcade stretches out at Hokkaido's oldest shopping district.

Shiseikan shogakko mae Sta.
Tsukisamu-dori Avenue

Sapporo Streetcar

Richmond Hotel Sapporo Odori

Tanukikoji

Susukino Sta.

SUSUKINO LAFILER

JR TOWER

The panoramic Sapporo view from the observation deck on the 38th floor is a must-see!

Observatory T38

Hotel Nikko Sapporo

Hakodate Line

JR Sapporo Sta.

ESTA
• (1 ~ 4F BIC CAMERA)

STELLAR PLACE

TOKYU DEPARTMENT STORE SAPPORO STORE
東急百貨店さっぽろ店

Sapporo Sta.

• ANA Crowne Plaza Sapporo

• Richmond Hotel Sapporo Ekimae

• New Otani Inn Sapporo

Snow Brand Parlor Sapporo Main Store

Sapporo Clock Tower

Sapporo Municipal Office

With its lovely time-telling bell chimes, this clock tower is the symbol of Sapporo.

Hokkaido Chuo Bus Sapporo Terminal

SAPPORO TV TOWER

Odori Sta.

Odori Bus Center

Sapporo Mitsukoshi
札幌三越

Asahikawa Shinkin Bank Sapporo Branch

Nishi yon chome Sta.

Marui Imai Sapporo Main Store
丸井今井札幌本店

SAPPORO PARCO

Susukino is bustling with a wide variety of shops, including regional cuisine restaurants, bars, and karaoke clubs.

Sapporo Ramen Yokocho

The conveniently accessible department store founded in 1872

This long-standing department store in Sapporo's Odori area is comprised of the Odori Building, the Ichijo Building, the West Building and KITA KITCHEN. Our basement food hall is located in the Odori Building, with B1F's grocery corner offering a variety of Japanese condiments, fresh fruits and deli items. B2F, meanwhile, is where confectionery, spirits, bakeries and more are abundantly gathered.

Sapporo / 札幌

Marui Imai Sapporo

Main Store

[丸井今井札幌本店]

www.maruiimai.mistore.jp/sapporo.html



📍 2 Minami-ichijo-nishi, Chuo-ku, Sapporo-shi, Hokkaido
☎ +81-(0)11-205-1151
🕒 10:30am-7:30pm Odori Bldg. 10F Restaurant Floor
11am-9pm (until 7:30pm on Sun), Shiseido Beauty Salon 10:30am-8pm (until 7:30pm on Sun) / KITA KITCHEN Aurora Town Shop 10am-8pm
🗓 Jan 1st 🚪 Exits 20, 22 and 33 of Odori Metro Sta.

| Services offered |



Enjoy the taste of various signature Japanese condiments in your own home!



1



2



3

1. KITANO ACE presents a variety of Japanese condiments such as miso and soy sauce. 2. Ferme LaTerre Biei entices with its "Rakunama" Cheese Fondue Cake containing both Hokkaido cream cheese and Hokkaido mascarpone (810 yen for 3). 3. Gozasoro (95 yen each) proudly present their specialty anko bean paste filling.



Please enjoy popular brands of Japanese sake, the pride of Hokkaido's breweries.

A long lineup of select gourmet foods from Hokkaido and across Japan.

Floors B1F and B2F of our Main Building host an assortment of world-renowned, long-standing and famous brands. The Main Building's Dining Mariage section (B1F) offers the finest selection of Japanese sake and wine, while the Dessert Mariage section (B2F) presents confectionery from Hokkaido (obviously!) and the rest of Japan, as well as Japanese green tea.

Sapporo / 札幌

Sapporo Mitsukoshi

[札幌三越]

www.mitsukoshi.mistore.jp/sapporo.html



📍 3-8 Minami-ichijo-nishi, Chuo-ku, Sapporo-shi, Hokkaido
☎ +81-(0)11-271-3311
🕒 10am-7pm / Main Bldg. 2F-B2, North Bldg. 10am-7:30pm
🗓 Jan 1st 🚪 Exits 12 and 13 of Odori Metro Sta.

| Services offered |



2



3

1. Dining Mariage showcases a complete lineup of Hokkaido-produced Japanese sake. Pictured are Kobayashi Brewery's Kita no Nishiki Tokubetsu Ginjo Maruta (1,595 yen, 720ml) and Kunimare Brewery's Kunimare Daiginjo (4,255 yen, 720ml). 2. Dessert Mariage offers a substantial selection of confectionery brands such as RYOGUCHIYA KOREKIYO's Tabimakura (540 yen for 10). 3. Fried kamaboko fish paste from Kamaei, whose main store is in Hokkaido's Otaru City.

Bringing you delicious tastes from across Japan, with Hokkaido taking center stage

Welcome to the newest department store in Hokkaido. In Japanese, we describe our reaction to something delicious as our “cheeks falling.” That being the case, our B1F food floor, Cheeks Town, certainly lives up to its name, teeming with delicious fresh foods, deli items, confectionery, and liquor.

Sapporo / 札幌

Daimaru Sapporo

[大丸札幌店]

www.daimaru.co.jp/sapporo/



🏠 4-7 Kita-gojo-nishi, Chuo-ku, Sapporo-shi, Hokkaido
☎ +81-(0)11-828-1111 (switchboard)
🕒 10am-8pm / 8F Restaurant Arcade 11am-10pm
📅 Jan 1st
🚶 Directly connected to both JR Sapporo and Sapporo Metro Sta.

| Services offered |



1. Double Fromage (right) and Chocolat Double (left) courtesy of emblematic Hokkaido confectioner LeTAO (1,728 yen, 12-cm diameter), whose only department store shop is under our roof. 2. Crispy on the outside, soft on the inside. Popular okonomiyaki shop Tsuruhashi Fugetsu. 3. Our store adjoins JR Sapporo Station.

Turn the flavors of popular Hokkaido shops, such as ramen and curry, into souvenirs!



1. Our Souvenir Plaza offers confectionery from every Hokkaido region as well as boil-in-the-bag pouches from famous Hokkaido shops. 2. Buy popular cookies from ISHIYAI (Single-unit purchases allowed). 3. Enjoy a signature Hokkaido Cheese Omelette from Snaffle's, whose eat-in corner is also popular. The Cake Set is 990 yen.

A basement food floor full of famous Hokkaido products with a comprehensive eat-in area!

Welcome to the distinguished department store connected to Sapporo Station via underground passage, and brimful of products representing the pride of Hokkaido such as Shiroi Koibito, whose sizable specialty store can be found within our walls. Garnering particular attention is our Tokyu Food Show (BIF), with its long lineup of specially-selected gourmet foods, including fresh produce, spirits and sweets. Our comprehensive eat-in facilities allow you to enjoy Hokkaido tastes on the spot!

Sapporo / 札幌

TOKYU DEPARTMENT STORE SAPPORO STORE

[東急百貨店さっぽろ店]

www.tokyu-dept.co.jp/sapporo/



🏠 2 Kita-jojo-nishi, Chuo-ku, Sapporo-shi, Hokkaido
☎ +81-(0)11-212-2211 ☎ 10am-8pm / "Dining dining"
10F restaurants 11am-10:30pm (except for some shops)
📅 Jan 1st 🚶 3-min walk from JR Sapporo Sta. South Exit / 2-min walk from Sapporo Metro Sta. Namboku Line, and 1-min walk from Toho Line (directly connected via underground passage)

| Services offered |



Even sake-lovers will be deeply satisfied with our spirits section, hosting sake from 25 Miyagi breweries.



A long-standing department store for fashion and gifts which faces rows of thriving zelkova trees on Aoba-dori Street.

This prominent department store in the Tohoku region was established in the Edo period. It is most attractive for its range of famous Sendai products, and you can be sure to find fantastic souvenirs in B1's Gourmet World. Furthermore, the Main Building 1F has an integrated tax-free shopping counter which can even handle products from participating stores in the adjacent shopping arcade.

Sendai / 仙台

FUJISAKI

[藤崎]

www.fujisaki.co.jp/



3-2-17 Ichibancho, Aoba-ku, Sendai-shi, Miyagi
☎ +81-(0)22-261-5111 ☎ 10am-7:30pm 🗓 Irregular holidays 🗓 A 10-min walk from JR Sendai Sta. / The Main Bldg. B2 is directly connected to Aoba-dori Ichibancho Metro Sta. on the Tozai Line

| Services offered |



1. B1F's Japanese and Western liquor section and its 25 Miyagi brands of Japanese sake. Tasting sessions are held each weekend. 2. Sendai Dagashi: a local confectionery tracing its roots back several hundred years to when the Date Clan ruled the area. A simple taste based on refined sugar and glutinous rice. 3. We are located right in the center of Sendai, and our integrated tax-free shopping counter even handles products from participating stores in the adjacent shopping arcade.



TOHOKU

December 1, 2019 – February 29, 2020
2019年12月1日至2020年2月29日


AOMORI


IWATE


MIYAGI


FUKUSHIMA


AKITA


YAMAGATA



Enjoy shopping!

HELLO KITTY ©1976, 2019 SANRIO CO., LTD. APPROVAL No. G602725


Manysales
促销特卖 促销特卖
ส่วนลดมากมาย


Lucky Draw
抽奖活动 抽奖活动
ลากีตวลอว์


Coupons
优惠券 优惠券
คูปองต่างๆ

Check!



<http://tohoku.japanshopping.org/>

Host:

 Japan Shopping!
Japan Shopping Tourism Organization

Official Sponsor:

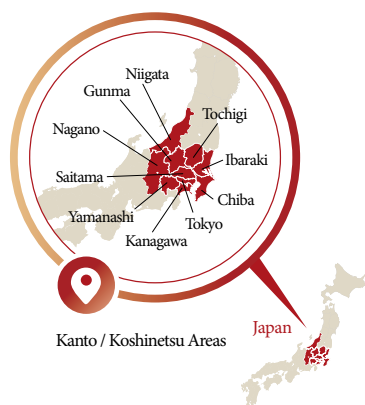
 JCB
Uniquely Yours

S-PAL

 HOTEL METROPOLITAN
HOTEL



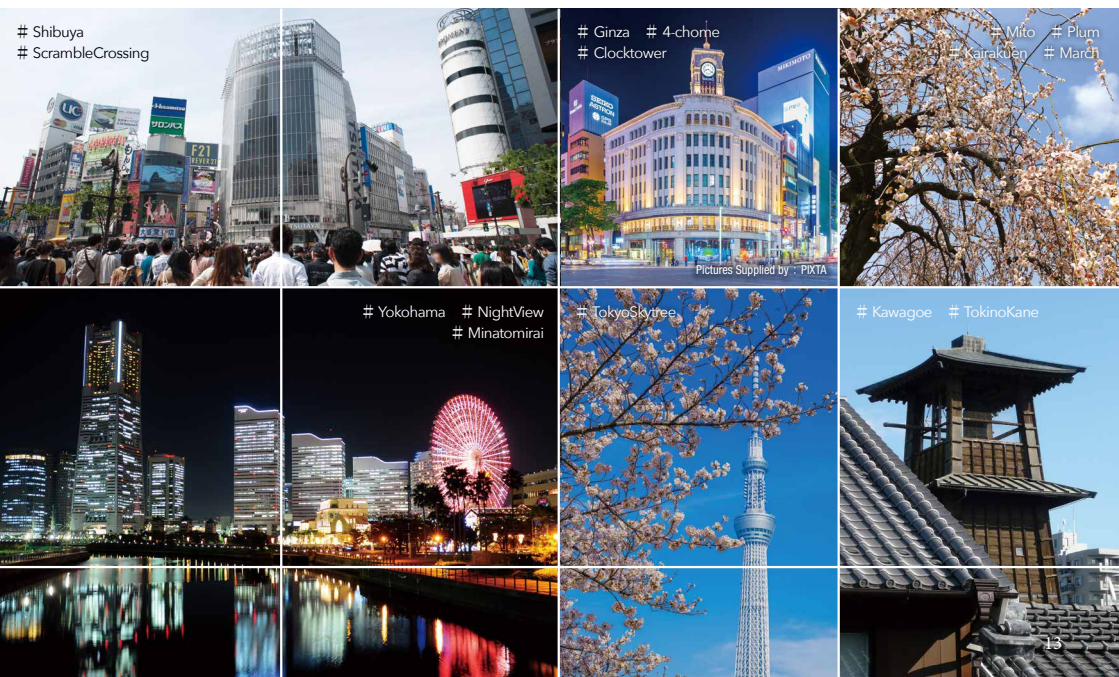
©Shinjuku Convention & Visitors Bureau



= 《 Guide to Depa-Chika 》 =

Kanto / Koshinetsu *Areas*

Shinjuku, Shibuya, Ikebukuro and Ginza — Japan's capital city is simply dotted with shopping areas. Here, department stores take on the roles of station landmarks. Meanwhile, on the outskirts of Tokyo lie two cities with firm links to the old Edo capital: Kawagoe — also known as “Koedo” (Little Edo) — to the northwest, and Ibaraki (of Mito Komon fame) to the northeast. To the south lies the ultra-exotic port city of Yokohama!



Tokyo Town Map

Tobu Department Store Ikebukuro
東武百貨店 池袋店

Ikebukuro Sta.

SEIBU Ikebukuro
西武池袋本店

Sunshine Aquarium

A world-first! See the newly opened overhead penguin tank on the high-rise rooftop.

Mejiro Sta.

Yamanote Line

Takadanobaba Sta.

Get a stunning view of the Tokyo cityscape from the tallest observation deck in the municipal area.

Higashi-Nakano Sta.

Okubo Sta.

Shin-Okubo Sta.

Odakyu Department Store Shinjuku
小田急百貨店 新宿店

Isetan Shinjuku Store
伊勢丹新宿店

TAKASHIMAYA SHINJUKU STORE
新宿タカシマヤ

Shinjuku Sta.

Tokyo Metropolitan Government Buildings

Shinjuku Gyoen National Garden

Keio Department Store, Shinjuku
京王百貨店 新宿店

The Chidorigafuchi-ryokudo Walkway is famous throughout the country as a prime cherry blossom viewing location.

Idabashi Sta.

Tokyo Dome City

Chuo Line

Ichigaya Sta.

Yotsuya Sta.

Shinanomachi Sta.

Akasaka Imperial Residence

New National Stadium

This will be the main stadium for the 2020 Tokyo Olympic & Paralympic Games.

TOKYU DEPARTMENT STORE HONTEN (Main store)
東急百貨店 本店

Meiji Jingu Shrine

Yoyogi Park

Harajuku Sta.

Omotesando Hills

SEIBU SHIBUYA
西武渋谷店

SHIBUYA109

Shibuya Hikarie ShinQs
渋谷ヒカリエ ShinQs

Shibuya Sta.

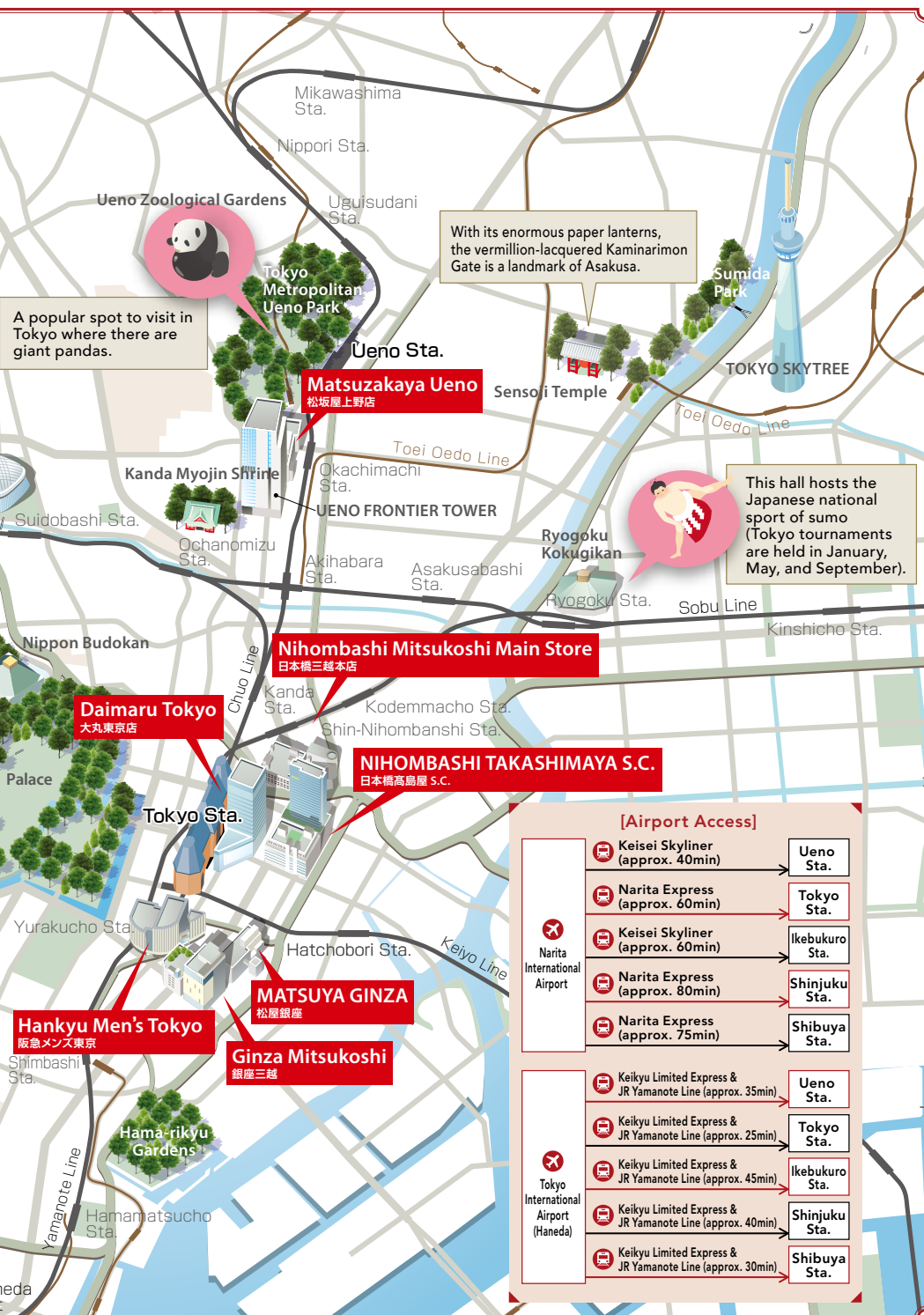
TOKYU Foodshow EDGE: SHIBUYA SCRAMBLE SQUARE
Shops & Restaurants 1F & B2F
東急フードショー エッジ 渋谷スクランブルスクエア
ショップ&レストラン 1F & B2F

TOKYU DEPARTMENT STORE TOYOKO STORE
東急百貨店 東横店

Roppongi Hills

Tokyo Tower

to Har Airport





Prepare to be spellbound by
this melt-on-the-tongue butter cream!



1. ÉCHIRÉ: PÂTISSERIE AU BEURRE's Sablé Sandwich (324 yen each), renowned for its moist texture, contains a healthy helping of cream made from the AOP-approved French fermented butter "Échiré". 2. Ameya Eitaro's Sweet Lip (594 yen each), looking just as cute as a cosmetic product, is exclusive to Isetan Mitsukoshi. 3. The Ameya Eitaro store appeals with its beautiful displays.



4. Noix de Beurre's Financier & Madeleine Set (2,700 yen), also exclusive to Isetan Mitsukoshi, is characterized by its gently-expanding buttery flavor. 5. Also exclusive to Isetan are these Petit Fours Secs (2,484 yen), courtesy of Le Salon Jacques Boris La Boutique, combining florentins and galettes.

The place to encounter flavors you can only find here!

Our reputation stems from the fine sense embodied by the product lineup our buyers have so strictly selected. As many of our brands are exclusive to either Isetan Shinjuku or Mitsukoshi Isetan group, there are certain delicious tastes you can only experience here. With food and drink specialists such as sake experts and vegetable sommeliers stationed throughout, you can have fun shopping with the advice of the pros.

Shinjuku / 新宿

Isetan Shinjuku Store

[伊勢丹新宿店]

www.isetan.co.jp/int



3-14-1 Shinjuku, Shinjuku-ku, Tokyo
☎ +81-(0) 3-3352-1111

🕒 10:00am-8pm / Main Bldg. 7F "Eat Paradise" Restaurant 11am-10pm
📅 Jan 1st Irregular holidays

🚶 1-min walk from Tokyo Metro Shinjuku-sanchome Sta. / 3-min walk from Toei Shinjuku-sanchome Sta. / 5-min walk from JR Shinjuku Sta. and Seibu-Shinjuku Sta. (Seibu-Shinjuku Line)

| Services offered |



TAKASHIMAYA
SHINJUKU STORE

[新宿タカシマヤ]

www.takashimaya.co.jp/
shinjuku/

5-24-2 Sendagaya, Shibuya-ku, Tokyo

☎ +81-(0)3-5361-1111

🕒 10am-8pm (until 8:30pm on Fri & Sat)

*except for some shops 🗓 Jan 1st

🚶 2-min walk from the Miraina Tower Ticket Gate of JR Shinjuku Sta. / 5-min walk from Shinjuku Sta. (Toei Shinjuku, Toei Oedo and Keio lines) / 3-min walk from Shinjuku-sanchome Sta. (Tokyo Metro Fukutoshin Line - directly connected to station entrance via B1F) / 2-min walk from Shinjuku Expressway Bus Terminal

| Services offered |



The Japanese wrapping, accented with washi paper, makes these products ideal souvenirs. Open it up, and sweets evoking the Shinjuku landscape magically appear!



Beautiful confectionery
evoking Shinjuku scenes.



Attracting customers with Takashimaya-exclusive confectionery from across Japan

Our inner-city store is excellently located at the New South Exit of super-accessible JR Shinjuku Station, and adjacent to Shinjuku Bus Terminal. Our Meika Hyakusen ("Top 100 Confectioners") zone in B1F's Gourmet Square hosts popular confectioners from across Japan as well as items exclusive to our store. Meanwhile, our cake select shop Patisserie shines with multicolored sweets from a total of 13 patissiers.

1. "Oedo no Bara" Tokyo Rose (2,160 yen, 210g) from Fukiyose, a registered trademark of Ginza Kikunoya, evokes Shinjuku imagery and is exclusive to Shinjuku Takashimaya. 2. Shimanami Lemon Cake (1,350 yen for 5) from Patisserie 1904. 3. Tokyo Hiyoiko's Meika Hiyoiko Shinjuku Takashimaya Limited Package (686 yen for 5) is wrapped in packaging which depicts our own department store.

Store
Exclusive

3

Store
Exclusive

1



Deriving our popularity from an abundant lineup and convenient access

Adjoining the West Exit of Shinjuku Station, Japan's busiest in terms of passenger numbers, we are outstandingly accessible. We offer a wide variety of shops on the Main Building's B2F, and a food floor on B2F of HALC Building, renovated and reopened in October 2019. The changes keep on coming, with MAISON ICHI recently opening a store here.

1. Confectioner Wittamer is the official purveyor to the Belgian Royal Family. Besides chocolate, baked confectionery and a multicolored array of cakes are also on display. 2. Popular boulangerie MAISON ICHI is renowned for its springy-textured bread made from natural yeast and high-quality wheat. It offers a French Deli in addition to its wide variety of breads. 3. We also host a shop managed by Ippodo Chahou, the Japanese tea specialist founded in Kyoto in 1717. 4. We adjoint Shinjuku Station West Exit.



Shinjuku / 新宿

Odakyu Department Store Shinjuku

[小田急百貨店 新宿店]

www.odakyu-dept.co.jp/shinjuku/



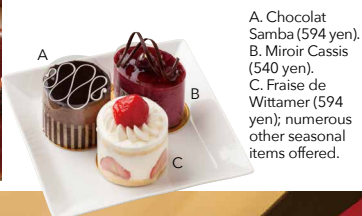
1-1-3 Nishi-shinjuku, Shinjuku-ku, Tokyo

+81-(0)3-3342-1111

10am-8:30pm (Until 8pm on Sun & Holidays)

*Opening hours may vary between floors and seasons Jan 1st Directly connected to Shinjuku Sta. West Exit

| Services offered |



A. Chocolat Samba (594 yen),
B. Miroir Cassis (540 yen),
C. Fraise de Wittamer (594 yen); numerous other seasonal items offered.

Delicious cakes from
the chocolate shop serving
as official purveyor to
the Belgian Royal Family.



A rich lineup of Tokyo-brewed sake!



Our liquor section, with its fine assortment of Japanese sake, has a QR code system which displays websites with detailed product information on your phone.

Shinjuku / 新宿

Keio Department Store, Shinjuku

[京王百貨店 新宿店]
www.keionet.com/info/
shinjuku/foreign/en/



1-1-4 Nishi-shinjuku, Shinjuku-ku, Tokyo
☎ +81-(0) 3-3342-2111
🕒 10am-8pm *Opening hours may vary between seasons and floors
🗺️ Irregular holidays
🚶 1-min walk from JR and Keio Line Shinjuku Sta.

Services offered |

* We convert foreign currency into Japanese yen.



1. Our sake lineup includes Sawano's Tokyo Kurabito Junmai Ginjo (1,834 yen, 720ml), Tokusen Daiginjo Ko (5,665 yen, 720ml) and Daiginjo (5,500 yen, 1,800ml) courtesy of Ozawa Brewery. 2. Hokkaido confectioner ISHIYA, famous for its Shiroyo Koibito white chocolate cookies, presents its Saku Langue de Chat Assortment (1,944 yen for 18 pieces) at its company store ISHIYA Shinjuku. 3. Ginza Suzuya's GINZA RICCA "Beans Glacé" (white kidney beans) (540 yen). 4. A short distance from all lines at Shinjuku Station.

Meet the season's ingredients and typical Japanese food in our basement!

Step out of Shinjuku Station's West Exit and you will soon find us! We have a wide range of foods ideal for Japanese souvenirs. Our B1F offers seasonal fruits, sushi made from fresh fish, and bento boxes, while our Middle Basement Floor (MBF) contains a liquor section, popular confectioners, bakeries, and deli specialists. Our homepage includes a site explaining our food sections in both English and Chinese, so please feel free to consult it when selecting your souvenirs.



Proudly presenting the largest
fully-stocked spirits section in Ginza!



1. We are located on Ginza's Chuo Street. 2. Have a taste, and find the tea you like at traditional Japanese tea maker ITO EN. 3. Guru Marché SAKÉ offers sakes from around 100 brewers, and a sake bar to enjoy them in! 4. GOUTER de ROI, the popular crunchy rusk cigars from GATEAU FESTA HARADA.

For Japanese souvenirs, come to a space which is typically Ginza, overflowing with luxury

Our main store proudly stands in an area at the forefront of Japanese luxury: Ginza. Our B1F Japanese and Western liquor section draws together a variety of domestic and international liquors including wine, sake and whisky, and offers you tasting opportunities with experts while you decide what to buy. We are also recommended as a place for distinctly Japanese souvenirs, such as highly popular confectionery and Japanese tea.



(left to right) From Dai-shichi Brewery in Fukushima, Dai-shichi Junmai Sake (1,401 yen, 720ml); from Shata Brewery in Ishikawa, Tengumai Yamahai Junmai Sake (1,540 yen, 720ml); and from Hakutaka in Hyogo, Hakutaka Ise Jingu Goryo Brewery Junmai Sake (770 yen, 500ml).

Ginza / 銀座

MATSUYA GINZA

[松屋銀座]

www.matsuya.com/visitor/en/



3-6-1 Ginza, Chuo-ku, Tokyo

+81-(0)3-3567-1211

10am-8pm *Closing hour varies by day

Irregular holidays

Directly connected to Exit A12 of Tokyo Metro Ginza Sta.

| Services offered |



Nihombashi Mitsukoshi Main Store

[日本橋三越本店]

www.mitsukoshi.co.jp/int/



1-4-1 Nihombashi-muromachi, Chuo-ku, Tokyo ☎ +81-(0)3-3241-3311 ⌚ 10am-7pm / Main Bldg. & Annex Bldg. 1F, basement floors until 7:30 pm / Annex Bldg. 9, 10F Restaurants 11am-10pm 🗓 Jan 1st, Irregular holidays 🚶 1-min walk from Tokyo Metro Mitsukoshimae Sta. (directly connected) / 5-min walk from Tokyo Metro and Toei Subway Nihombashi Sta. / 7-min walk from JR Shin-Nihombashi Sta. / 10-min walk from JR Tokyo Sta.

| Services offered |

* We convert foreign currency into Japanese yen.



Store
Exclusive

Baumkuchen packaged in an ukiyoe representation of Edo scenery, exclusive to Mitsukoshi Nihombashi (1,728 yen). Ever particular about the ingredients, expert craftsmen deploy time-honored techniques to gently bake the cake layer by layer.

Basement food halls in both our historic Main Building and New Building!

Founded in 1673, we are Japan's oldest department store, whose main building has been designated as an Important Cultural Property. Our food floors occupy B1F of the Main Building, and B1F/B2F of the Annex, with the latter's CLUB Harie Baumkuchen specialty store among the popular attractions. Our first store renewal project in 30 years, launched in 2018, has enabled us to strengthen our focus on personalized shopping. We currently have 150 concierges throughout the store.

1. Our CLUB HARIE specialty store is managed by Omi's traditional confectioner Taneya and integrated with a café. 2. The genuine French confectioner BOUL' MICH allows you to buy baked confectionery in a pouch. (826 yen for a 2-piece set). 3. These pocket tins of assorted candy form part of Edo sweet shop Eitaro Sohomo's 200th anniversary celebration (1,296 yen for a tin of 3). 4. The present Main Building was extended and reconstructed in 1935.



Outside of their Shiga Prefecture workshop, we are the only place at which you can observe this baking process!

The inner-city shopping center which makes you feel as if you're walking about town.

Opened as recently as September 2018, Takashimaya S.C. is a brand new inner-city shopping center comprised of four buildings. The specialty shop zones in the New Building and Main Building GALLERIA play host to over 110 new shops and bustle with a wide range of customers. Our Japanese and Western confectionery area on B1F has received a total makeover, and hosts a variety of famous shops which are ideal for souvenir hunting.

1. THE BEST CHOICE stocks Le Petit Bonheur's pates de fruits Jewelry Box (3,601 yen for 48).
2. Tsukimiteyo bean-jam-filled monaka wafers (1,620 yen for 6) from long-standing Hamamatsu confectioner Ganyudo.
3. Demel's Strudel (1,080 yen).
4. Our charming building has been designated an Important Cultural Property.



Nihombashi / 日本橋

NIHOMBASHI
TAKASHIMAYA S.C.

[日本橋高島屋 S.C.]

https://www.takashimaya.co.jp/tokyo/store_information/index.html



📍 2-4-1 Nihombashi, Chuo-ku, Tokyo
☎ +81-(0)3-3211-4111 📍 Main Building
🕒 10:30am-7:30pm 📅 Jan 1st 🚶 5-min walk
from Yaeu North Exit of JR Tokyo Sta. /
Directly connected to Exit B2 of Tokyo Metro
Nihombashi Sta. / 4-min walk from Toei
Subway Nihombashi Sta.

| Services offered |



THE BEST CHOICE select shop offers over 20 brands of Japanese and Western confectionery, specially selected by our confectionery buyers and recommended as souvenirs.



This fruit-flavored confiserie is almost like a jewelry box!





Nearly all people
who try it, buy it!
The crunchy texture provides
much enjoyment!



1. Noix's Walnut Cookies (1,458 yen for 9), with their chewy texture and double-roasted walnut scent. 2. Tokyo Campanella's Chocolat (3,000 yen for 24), the three-layered sweet comprised of thin-fried langue de chat and chocolat, makes a suitable gift for more mature customers. 3. We adjoin the North Exit of Tokyo Station.

With our vast array of popular sweets, we are right there as you walk out of Tokyo Station!

When exiting the Tokyo Station ticket gates, enter the store directly in front of you and you will be welcomed by Depa-ichi Sweets, our section which gathers Tokyo's trendiest confectioneries. Our B1F, which is renowned as the biggest of its kind in Japan due to its number of shops and size, hosts everything from famous confectioners to traditional bento and deli shops.

Marunouchi / 丸の内

Daimaru Tokyo

[大丸東京店]

www.daimaru.co.jp/tokyo/



📍 1-9-1 Marunouchi, Chiyoda-ku, Tokyo
☎ +81-(0) 3-3212-8011 (switchboard)
🕒 B1-1F 10am-9pm / 2-11F 10am-8pm /
12F Restaurants 11am-11pm / 13F Restaurants 11am-
12am 🗺 Jan 1st 📍 Just outside the Yaesu North
Exit ticket gate of JR Tokyo Sta.

| Services offered |



The landmark of Ueno-Okachimachi, inspiring deep trust since the Edo era

Founded in 1768, our department store is renowned as the birthplace of the "elevator girls" and the "children's lunch." As the landmark of the local area, we are constantly starting new cultural trends. A host of famous shops, offering everything from deli items to sweets, line up inside our B1F food arcade Cheeks Town, while our Ueno Information Center sells souvenirs specific to Ueno.

Ueno / 上野

Matsuzakaya Ueno

[松坂屋上野店]

www.matsuzakaya.co.jp/ueno/



📍 3-29-5 Ueno, Taito-ku, Tokyo
☎ +81-(0) 3-3832-1111 (switchboard) 🕒 10am-8pm
🗺 Jan 1st 📍 2-min walk from JR Okachimachi Sta. /
Directly connected to Tokyo Metro Ueno-hirokoji Sta. /
3-min walk from Tokyo Metro Naka-okachimachi Sta. /
7-min. walk from Keisei Ueno Sta.

| Services offered |



This bento allows you to freely enjoy
the taste of an Asakusa sukiyaki restaurant.

* Image for reference only.



1. Among our bento offerings is this Japanese Black Wagyu Beef Bento (1,296 yen), carefully prepared with a secret sukiyaki stock recipe courtesy of Asakusa Imahan, a shop dating back to 1895. 2. Saryo Itoen's Mixed Shiratama Azuki bean Soft Cream (530 yen) comprises a mixed matcha and roasted-green-tea soft cream topped with azuki beans, "Shiratama" rice-flour dumplings, and a Cigare. 3. Close to the station and conveniently accessible.

A treasure house of food stacked with various deli and confectionery items

Our B1F is home to the Tokyu Food Show food theme park, housing a lineup of seasonal tastes and temporary shops. Our Shibuya STAND eat-in space, in which you can enjoy the bento boxes and sweets you purchase, is also popular. Compile your desired menu from various shops, and relish the taste of freshly-made food!

Shibuya / 渋谷

TOKYU DEPARTMENT STORE TOYOKO STORE

[東急百貨店 東横店]

www.tokyu-dept.co.jp/toyoko/

*The Toyoko Store, except for the food section, etc., will close as of March 31, 2020

📍 2-24-1 Shibuya, Shibuya-ku, Tokyo
☎ +81-(0)3-3477-3111 (switchboard) 🕒 10am-9pm
/ West Bldg. 9F "Dining dining" Restaurant Arcade
11am-10:30pm (last orders 10pm) *Opening hours may vary between sections 🗓 Irregular holidays
🚶 Directly connected to Shibuya Sta. (Tokyu Toyoko, Den-en-Toshi, Metro Ginza, Metro Fukutoshin, JR, Keio Inokashira lines)

Services offered |



1. An example of the products on offer at Shibuya STAND; dishes from our RF1 deli section which everybody loves: Fried Shrimp (1,210 yen for 200g), Avocado and Fried Chicken Green Salad (880 yen for 200g), Antonio-style Tomato Salad from Antonio (550 yen), Bacon and Cheese Calzone (462 yen each), Big Octopus Takoyaki from Kukurū (693 yen for 8) and Uji Matcha Latte from Ichimaru-hachi Matcha Saro (501 yen). 2. Cheese Fondue Cake (825 yen for 3) and Oeuf au Lait ("Egg with Milk," 330 yen each) from LaTerre Saison. 3. Shrimp Cutlet and Multi-flavored Salad Sandwich (429 yen each) from BLOSSOM & BOUQUET.



Colorful baked confectionery offering a host of flavors.



Source: Shibuya Future, Kyodo Building Operator



A new local landmark opened just in front of Shibuya Station

Welcome to Tokyu Foodshow Edge, located inside the brand-new SHIBUYA SCRAMBLE SQUARE Shop&Restaurant which opened in November 2019. Based on the concept of a "food entertainment space," we house live kitchens and an eat-in corner. To encounter newsworthy shops regardless of genre, head to our HEAD LINE section, which generates height-of-season food trends.

Shibuya / 渋谷

TOKYU Foodshow EDGE: SHIBUYA SCRAMBLE SQUARE Shops & Restaurants 1F&B2F

[東急フードショー エッジ]

渋谷スクランブルスクエア ショップ & レストラン 1F&B2F

www.tokyu-dept.co.jp/scsq



📍 2-24-12 Shibuya, Shibuya-ku, Tokyo 🕒 10am-9pm
🗓 Irregular holidays 🚶 Directly connected to Shibuya Sta. (Tokyu Toyoko, Den-en-Toshi, Metro Ginza, Metro Fukutoshin, Keio Inokashira, JR lines)

Services offered |



The flagship store overflowing with a luxury feel

We are located a 5-minute walk away from Shibuya Station, directly along Bunkamura-dori Street. Our B1F hosts over 50 shops including confectioners and bakeries, in addition to our morning fresh food market, The Market Plus. We appeal with our calm, relaxed atmosphere, allowing you ample time to decide on your purchases.

Shibuya / 渋谷

TOKYU DEPARTMENT STORE

HONTEN (Main Store)

[東急百貨店 本店]

www.tokyu-dept.co.jp/honten/

2-24-1 Dogenzaka, Shibuya-ku, Tokyo

+81-(0)3-3477-3111 (switchboard)

⌚ B1-1F 10am-8pm / 2-6F, 8F, rooftop 10am-7pm / 7F Maruzen and Junkudo Shoten 10am-9pm / 8F Restaurants 11am-10:30pm (Last orders at 9:45pm)

🗓 Irregular holidays 🗺 5-min walk from Shibuya Sta. (JR, Tokyo, Metro, Keio Inokashira lines)

| Services offered |

English

Chinese

Tax Free

🔄

📺

📺

📺

📺

📺

📺

1. Sommeliers and other specialists are permanently stationed in our Japanese and Western Liquor Section. Several of our staff also hold gift advisor's licenses, and are ready to advise you appropriately. 2. Club Harie Baum mini (1,728 yen for 4), with its exclusive packaging sporting a Shibuya Hachiko Statue motif. 3. We are adjacent to the Bunkamura cultural complex.

Elegant sweets from a Paris-based patisserie.

1. Patisserie Sadaharu AOKI paris, offering (from the top) Chocolat pralin (810 yen), Saya (897 yen) and Bamboo (897 yen). 2. mango tree kitchen, the best place to enjoy the taste of Thai cooking, offers a Chicken Gapao Bowl and Original Fresh Rice Noodle Pad Thai (815 yen each). 3. We connect directly with the second floor of Shibuya Station, and all its lines.

The place where you are sure to meet with sophisticated items!

We are housed on floors B3 to 5 of the local landmark Shibuya Hikarie. With many shops debuting in either Shibuya or Tokyo as a whole, we are the ideal place for souvenirs. Our B2F hosts confectioners, bakeries and wines, while our B3F welcomes you with delicatessens and a natural foods market.

Shibuya / 渋谷

Shibuya Hikarie ShinQs

[渋谷ヒカリエ ShinQs]

www.tokyu-dept.co.jp/shinqs/

2-21-1 Shibuya, Shibuya-ku, Tokyo

+81-(0)3-3461-1090 (switchboard)

⌚ 10am-9pm (Opening hours may vary between sections) 🗓 Irregular holidays 🗺 Directly connected to Exit B5 of Shibuya Sta. (Tokyu Toyoko, Den-en-toshi, Tokyo Metro Fukutoshin lines) / Accessible via the 2F passageway at Shibuya Sta. (JR, Keio Inokashira lines)

| Services offered |

English

Chinese

Tax Free

🔄

📺

📺

📺

📺

📺

25



Gorgeous sweets with
a rose and tulip motif.



1. Tulip Rose (1,080 yen for 6). 2. TOKYO Tulip Rose, the flagship store of young chef Masahito Kanaï, who learned his trade in Paris. 3. Ikebukuro no Ikebukuro (648 yen for 5) is an original product from the Keishindo shop in the Seibu Ikebukuro Main Store. 4. A great location very near to Ikebukuro Station East Exit.



Coming in three types
of flavor (berry, passion
mango, caramel), and
perfect either as a gift or
a reward for yourself!

Outstanding access from Ikebukuro Station and a basement buzzing with energy.

Straddling the North, Central and South Zones of the Main Building, our basement food floors, and the sheer number of shops within, are arguably our store's highlight. Our B1F presents "Sweets & Gifts" and "Okazu Ichiba" deli section, while our B2F welcomes you with "Freshness Club" grocery section and a high-quality supermarket. We also have so-called "sweets attendants" on hand to help you with your confectionery shopping.

Ikebukuro / 池袋

SEIBU Ikebukuro

[西武池袋本店]
www.sogo-seibu.jp.e1d.hp
transer.com/ikebukuro/



1-28-1 Minami-ikebukuro, Toshima-ku, Tokyo
☎ +81-(0)3-3981-0111 (switchboard) ⌚ 10am-9pm (Until 8pm on Sun & holidays) / 8F
Restaurants 11am-11pm (From 10:30am on weekends & holidays) *Opening hours may vary between stores 🗓 No holidays
📍 Directly connected to East Exit of Ikebukuro Sta. (JR, Tobu-Tojo, Seibu-Ikebukuro, Tokyo Metro lines)

| Services offered |



Tobu Department Store Ikebukuro

[東武百貨店 池袋店]

www.tobu-dept.jp/ikebukuro/



1-1-25 Nishi-ikebukuro,
Toshima-ku, Tokyo
☎ +81-(0) 3-3981-2211 (switchboard)
🕒 10am-8pm / B2-3F, 6F (Zones 3-7), 9F, 10F
10am-9pm (except Sun & holidays)
/*Spice Restaurant Arcade 11-13F 11am-10pm, 14-15F 11am-11pm (until 10pm on Sun)
📅 Irregular holidays 📍 Directly connected to Ikebukuro Sta. (JR, Tobu-Tojo, Seibu-Ikebukuro, Tokyo Metro lines)

| Services offered |



The Elderflower Double Cheese Cake is comprised of two layers: light-textured cheese soufflé and soft no-bake cheesecake (1,404 yen for 4).



The treasure house of deliciousness just outside Ikebukuro Station!

We are the department store proudly presenting the largest shopfloor in Tokyo. Our food floors are divided between B1F and B2F, and conveniently partitioned into separate categories: Bakery Terrace, a collection of noteworthy bakeries; Sweets Market, with its collection of confectioners; Sake Market, offering snacks as well as spirits; and DELI Market, complete with a demonstration kitchen.

1. Yokumoku, the western confectioner headquartered in Aoyama. 2. Roast Caramel Macaron (1,080 yen for 8) from the eponymous caramel specialty store. 3. Dalloyau Les Macarons' Petite Fleur (1,620 yen for 4): four bitesize cakes in a box. 4. We adjoin Ikebukuro Station.



Long-standing confectioners present
baked confectionery and more!



Think “Yokohama department store,” think Takashimaya! The long-standing store that keeps taking on new challenges!

Welcome to the store which demonstrates its liveliness through active promotion of Yokohama brands and novel trials. Since September 2019, we have expanded our food and drink operations with a temporary facility on JOINUS B1F, which we plan to open in stages until 2021. Our Weekly Events, featuring different noteworthy brands each week, are also popular.

1. Western confectioner AUDREY has customers queuing from the moment it opens.
2. These ultra-popular Kurumikko walnut sweets (1,167 yen for 8) are the signature product of Kanagawa's Kamakura Beniya.
3. Karinto specialist Azabu Karinto permanently displays around 50 types of sweets, offering both standard and seasonal flavors.
4. A stone's throw from Yokohama Station's West Exit.



Yokohama / 横浜

**TAKASHIMAYA
YOKOHAMA STORE**

[横浜タカシマヤ]

www.takashimaya.co.jp/yokohama/



1-6-31 Minami-saiwai, Nishi-ku, Yokohama-shi, Kanagawa

+81-(0)45-311-5111

10am-8pm : *Parts of basement area until 9pm/ Restaurant Arcade 11am-10:30pm

Jan 1st 1-min walk from the West Exit of Yokohama Sta. (JR, Sotetsu, Tokyu Toyoko, Keiiku, Minatomirai, Yokohama Municipal Subway lines)

| Services offered |



AUDREY's GLACIA (2,025 yen for 15) and GLACIA CHOCOLAT (1,620 yen for 12) have a long shelf-life and therefore make for ideal souvenirs.



Prepare to be tempted by
these lovely strawberry sweets!





We have a lineup of around
350 treasured
Kanagawa flavors.



Hakone Sanroku Kocha Black Tea and Ashigara-cha, with their fun designs, can be bought either in a resealable bottle (134 yen, 490g) or as teabags decorated with an ukiyoe by legendary Edo artist Katsushika Hokusai (1,080 yen for 20). Available from B2F's Kanagawa-ya.

Yokohama / 横浜

SOGO YOKOHAMA

[そごう横浜店]

www.sogo-seibu.jp/yokohama/



🏠 2-18-1 Takashima, Nishi-ku, Yokohama-shi, Kanagawa
☎ +81-(0)45-465-2111 (main switchboard)
🕒 10am-8pm / 10F Restaurants "Dining Park Yokohama" 11am-11pm 🗓 No holidays
🚶 3-min walk from Yokohama Sta. East Exit (JR, Tokyu, Minatomirai, Keihin Express, Setetsu, Yokohama Municipal Subway lines)

| Services offered |



1. Kanagawa-themed store Kanagawa-ya offers everything from processed products to fresh vegetables. 2. Daiginjoshu Yokohama Yume Seiki (4,180 yen, 720ml), from Kanai Brewery Store, is a sake brand exclusive to SOGO YOKOHAMA (B2F Spirits Section). 3. Sobachoko Cup Pudding (720-810 yen) courtesy of Hayama's handmade beaker pudding specialist Marlowe (B2F). (Contents, design and price vary with the season). 4. Our free Wi-Fi service across all buildings commenced in August 2018.

Adjoining Yokohama Minato Mirai 21— the place to go for famous Kanagawa and Yokohama products

In addition to the obligatory basement food section, we also offer fashion, general goods, restaurants and an art museum. You can find around 200 shops, Japanese and Western confectionery, deli items and an eat-in corner in our huge EVERYDAY B2F food hall. Since 2018, these attractions have been joined by a Kanagawa-themed shop. Meanwhile, maisonport on our 1F beauty floor distributes a multitude of information on beauty and health from a dietary viewpoint.

Rich-scented hard Baumkuchen



1. Hanamizuki Mt. Tsukuba Baumkuchen (hard-type baum, 1580 yen each).
2. Hanamizuki also offers various black teas, such as Tokiwa - produced from local Ibaraki tea leaves (540 yen for five 2-gram teabags; 1,026 yen per 50g bag; 1,728 yen per 75g tin).
3. Check out our modern building!

The only department store in Ibaraki, filled with famous local products!

110 years on from our establishment, Autumn 2019 saw the renewal of our Confectionery Corner B1F, with the addition of such long-standing names as Toraya, Funabashi-ya and Fukusaya. Our Weekly Gourmet, which introduces different Japanese foods each week, attracts considerable attention. Why not stop by while you visit the local plum blossom haven of Kairakuen Park!

Ibaraki / 茨城

KEISEI Department Store

[京成百貨店]

www.mitokeisei.co.jp/



1-6-1 Izumi-cho, Mito-shi, Ibaraki
☎ +81-(0)29-231-1111 (switchboard)
⌚ B1-7F 10am-7:30pm / 8F Specialty Store Floor 10am-9pm / 9F Restaurants 11am-10pm (some shops have varying hours) 🗓 Irregular holidays
🚗 5-min taxi ride from the North Exit of JR Mito Sta. / 7-min via Bus 4 or 5 (get off at Izumi-cho 1-chome Bus Stop) / 17-min walk from Mito Sta.

| Services offered |



The department store firmly in the mould of its locality, packed with Kawagoe souvenirs

Greetings from the only department store in Kawagoe, also called "Koedo," now in business for 80 years. Surrounded by charming buildings and mouthwatering eateries, we offer you a great chance to find coveted local souvenirs during your sightseeing visit. We are full of love for our locality, as you will see from our paper bags and packaging adorned with Saitama's local flower, the primrose.



Saitama / 埼玉

Maruhiro Department Store Kawagoe

[丸広百貨店 川越店]

www.maruhiro.co.jp/



📍 2-6-1 Shintomi-cho, Kawagoe-shi, Saitama
☎ +81-(0)49-224-1111 (switchboard)
⌚ 10am-7pm / 6F Restaurants 10:30am-7pm (last orders at 6:30pm) 🗓 Irregular holidays 🚶 4-min walk from Seibu Line Hon-Kawagoe Sta. / 7-min walk from Kawagoe Sta. East Exit (Tobu, JR lines)

| Services offered |



1. Ichiro's Malt White Label (3,850 yen for 700ml) from Venture Whisky is a blend using malt whisky from Chichibu Distillery as the main ingredient.

2. A COEDO Premium Beer Set (2,159 yen for six 333ml bottles) from COEDO Brewery, producers of the much-loved local craft beer. 3. A long-standing store adored by generations of locals.

You'll want to send this to
whisky lovers! A fine whisky
matured in Chichibu.



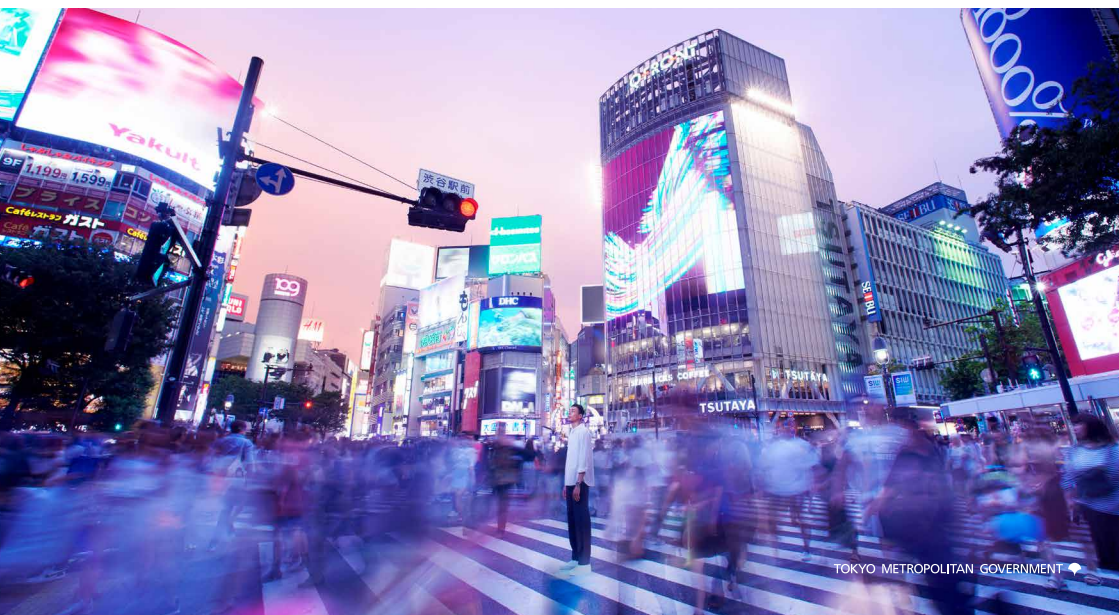


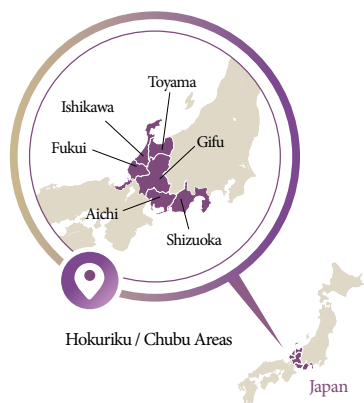
Tokyo

Old meets New

Tokyo

Tokyo breathes with the tradition of four hundred years since the Edo period. It's a city that never stops and embraces the future. Tradition and innovation meet and evolve to create new value here in Tokyo. Old meets New It's the energy and excitement of Tokyo. Experience the surprises that start here.

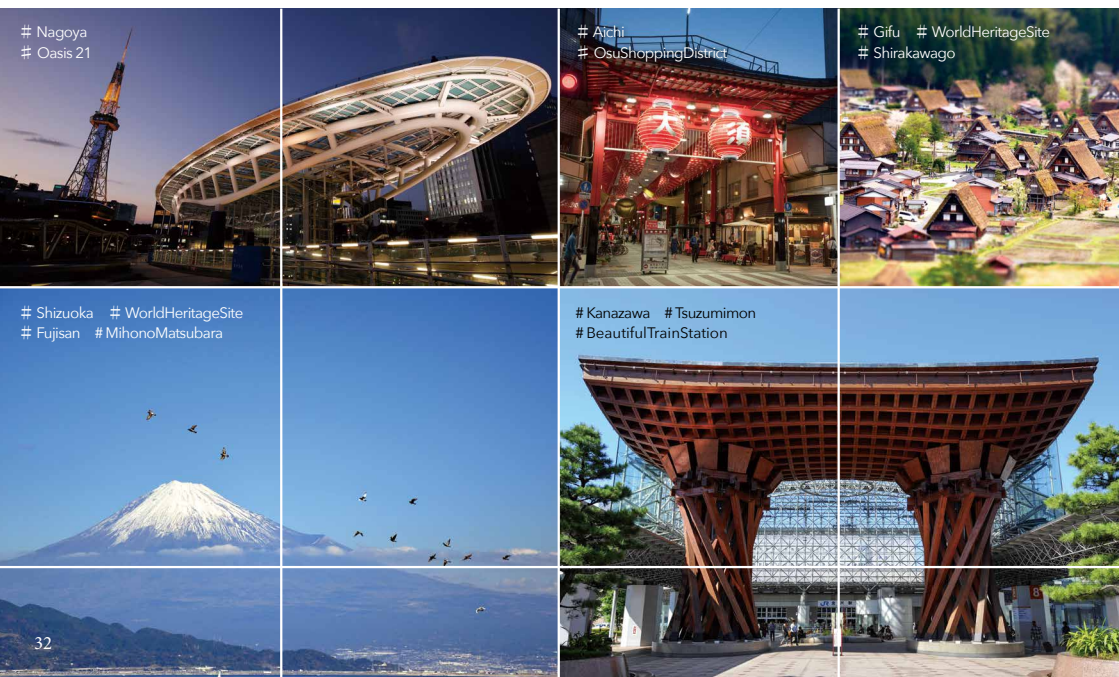




— 《 Guide to Depa-Chika 》 —

Hokuriku / Chubu *Areas*

The Chubu area contains Nagoya, Japan's third largest city. As if in contrast to the historic Nagoya Castle, several symbols of modernity lie in various locations throughout the city. The neighboring area of Shizuoka plays host to another Chubu gem— Mount Fuji, now a World Heritage Site. If you cut across Honshu to the north, you reach the Hokuriku area fronted by elegant Kanazawa City, which has been dubbed "the land which yields one million koku units of rice."



Nagoya Town Map

Nagoya Castle is the shining symbol of Nagoya, replete with Tenshu architecture and golden tiger-headed carps.

This city oasis is surrounded by red brick architecture that evokes the region's ceramic culture.

Noritake Garden

Nagoya Castle

Meijiyo Park

Nagoya Castle
Tommaru Palace

Shiyakusho Sta.

Higashi Ote Sta.

Nagoya City Hall

Aichi Prefectural Government

Sengen-cho Sta.
Subway Tsurumai Line

Nagoya Expressway Ring Route

JR Nagoya Takashimaya
ジェイアール名古屋タカシマヤ

Midland Square

Dai Nagoya Building

JR Tower Nagoya

JR Central Towers

Meitetsu Nagoya Sta.

Kintetsu Nagoya Sta.

Meitetsu Department Store
Main Store
Kintetsu Pass'e

Marunouchi Sta.

Marunouchi Sta.

Kokusai Center Sta.

Fushimi Sta.

SUNSHINE SAKAE

Nagoya Sakae Mitsukoshi
名古屋栄三越

Nagoya City Science Museum

LACHIC

Shirakawa Park

Nagoya City Art Museum

Nagoya PARCO

Matsuzakaya Nagoya
松坂屋名古屋店

Yaba-cho Sta.

Hisaya-odori Garden Flarie

Kamimaezu Sta.

Tsurumai Sta.

Osu Kannon Sta.

Osu Kannon Temple

Osu Shopping District

Visit this bustling shopping district to enjoy a variety of cheap snacks and recycled clothing shops.

The giant mannequin doll "Nana-chan" is a popular meet-up spot.

[Airport Access]

Chubu International Airport (Centrair)



μ-SKY Limited Express (approx. 40min)



Airport Limousine Bus (approx. 80min)



μ-SKY Limited Express & Meijo Subway Line (approx. 50min)



Airport Limousine Bus (approx. 60min)

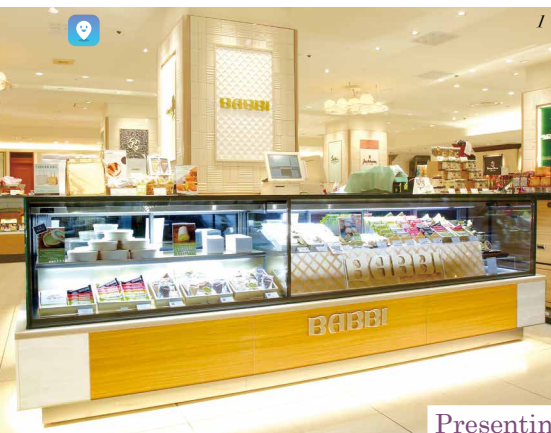
Nagoya Sta.

Sakae Sta.

Otobashi Sta.

Higashi Betsuin Sta.

Chuo Line



Presenting numerous popular sweet brands!



5. Our LA CAVE liquor shop suggests different alcohol and food pairings each week.
6. We are located in Sakae town center.

With a basement food floor housing shops from the Tokai region and the country at large

In addition to international confectionery shops making their debuts in the Tokai region, such as PIERRE HERMÉ PARIS and HOLLANDISCHE KAKAO-STUBE, our B1F presents long-established Japanese confectioners such as RYOGUCHIYA KOREKIYO and MINOCHU. When unsure of what souvenirs to buy, simply head to our KAYUAN area replete with confectionery from across Japan, specially selected by Mitsukoshi.

1. BABBI, founded in Emilia-Romagna, Italy
2. Waffelini Pistachio and Vanilla (3,780 yen), attractive for their light texture and soft, melt-in-the-mouth cream.
3. Yokumoku, the western confectionery brand renowned for baked confectionery such as these carefully baked cookies.
4. Introducing Yokumoku's ever-popular product, Cigare (702 yen for 10; 1,458 yen for 20; 2,160 yen for 30).

Nagoya / 名古屋

Nagoya Sakae

Mitsukoshi

[名古屋栄三越]

www.mitsukoshi.co.jp/nagoya

3-5-1 Sakae, Naka-ku, Nagoya-shi, Aichi
☎ +81-(0)52-252-1111

🕒 10am-8pm 🗓 Jan 1st

🚶 Connected via underground passage to Sakae Sta.(Nagoya Municipal Subway Higashiyama and Meijo lines), and Sakae-machi Sta. (Meitetsu Seto Line)

| Services offered |

* We convert foreign currency into Japanese yen.



Nagoya's largest department store, with everything from meals to souvenirs!

We are one of the largest department stores in Japan, with over 400 years of history behind us. Our Gochiso Paradise area on B1F and B2F of the Main Building hosts everything from traditional and/or high-quality branded products to deli items and Japanese and Western liquor, further appealing with its array of seasonal foods and gifts. Inside our specialty food store Table Plus+ (B2F), you can enjoy daily tasting sessions at our D&M CAVE liquor section.

Nagoya / 名古屋

Matsuzakaya Nagoya

[松坂屋名古屋店]

www.matsuzakaya.co.jp/nagoya/



🏠 3-16-1 Sakae, Naka-ku, Nagoya-shi, Aichi
☎ +81-(0) 52-251-1111 (switchboard) 📍 Main Bldg. 2-8F, South Bldg. B2-3F, North Bldg. 1-3F 10am-8pm / Other floors 10am-7:30pm; however, Main Bldg. 9F & 10F, South Bldg. 4-10F, North Bldg. B1F have shops with varying hours 📅 Jan 1st 🚶 Directly connected via underground passage from Exits 5 and 6 of Yaba-cho Metro Sta. /5-min southward walk from Sakae Metro Sta.

| Services offered |



1

Thin-grilled eel: a unique soup stock and seasoning to be relished, and finished with a secret 'tare' sauce recipe.



2



3

1. These Hitsumabushi eels (charcoal-cooked, soy-sauce flavored) from Atsuta Horaiken (3,870 yen) have the profound flavor that only a long-standing shop can provide. 2. Mamefukunamono snacks from Mamefuku come in three flavors: Hatcho-miso Cashew, Nishio Matcha Daizu and Ebishio Almond (1,296 yen for 12; four of each flavor). 3. One of Japan's largest department stores faces a lush green park.



Cute cookies in the shape of local icon Mt. Fuji.



Adjoining Shizuoka Station and ideal for local souvenir hunting

Fresh foods, deli and bakery items and Japanese and Western liquor form only a part of the varied lineup on our B1F food floor. Our Tsuruga no Kuni Sansandokoro area draws together famous confectioners and Japanese products including Shizuoka green tea and Mt. Fuji-themed confectionery. We adjoin Shizuoka Station, so why not stop by for souvenirs!

Shizuoka / 静岡

Matsuzakaya Shizuoka

[松坂屋静岡店]

www.matsuzakaya.co.jp/shizuoka/



🏠 10-2 Miyuki-cho, Aoi-ku, Shizuoka-shi, Shizuoka
☎ +81-(0) 54-254-1111 🕒 10am-7:30pm / B1-1F 10am-8pm 📅 Jan 1st 🚶 3-min walk from JR Shizuoka Sta. North Exit (directly connected via underground passage)

| Services offered |



2



3

1. Mt. Fuji Hororin Chocolat cookies (756 yen for 12) create a soft, smooth melt-in-the-mouth feeling. They come in three flavors: chocolate, strawberry and matcha. 2. Sekai Fuji Shizuoka Matcha-an (680 yen for 5) see Shizuoka matcha anko bean paste gently wrapped in a dough rich in egg and honey, then mildly baked. 3. We adjoin JR Shizuoka Station.

The department store adjoining Nagoya Station and in tune with the latest trends

Welcome to the conveniently accessible department store based in JR Central Towers. Our product range extending from the latest sweets to souvenirs, and including numerous exclusive items, earns us the strong confidence of our customers, especially women. We also offer a complete selection of Nagoya foods, meaning you can comfortably sample the tastes and flavors which only our region can genuinely offer.

Nagoya / 名古屋

JR Nagoya Takashimaya

[ジェイアール名古屋タカシマヤ]

www.jr-takashimaya.co.jp/



1-1-4 Meieki, Nakamura-ku, Nagoya-shi, Aichi
 ☎ +81-(0)52-566-1101 ⌚ 10am-8pm *except for some shops 🗓 Jan 1st 🚶 Directly connected to Nagoya Sta. (JR, Meitetsu, Kintetsu and other lines)

| Services offered |



Highly reputable:
the Nagoya souvenirs
exclusive to this store only.



1. This Yukari Golden Tin Limited Package (1,080 yen per tin of 12) courtesy of Bankaku Sohomo is characterized by its typically Nagoyan golden packaging and depiction of Nagoya military commander (and Shogun) Tokugawa Ieyasu. 2. These chopped eels on rice (2,592 yen) from Shirakawa are grilled without steaming, and have a delightfully soft texture. 3. We are only a short walk from JR Nagoya Station.

早龍道



The Dragon Route Fair

Jan-Mar 2020

(Period differs by establishment)

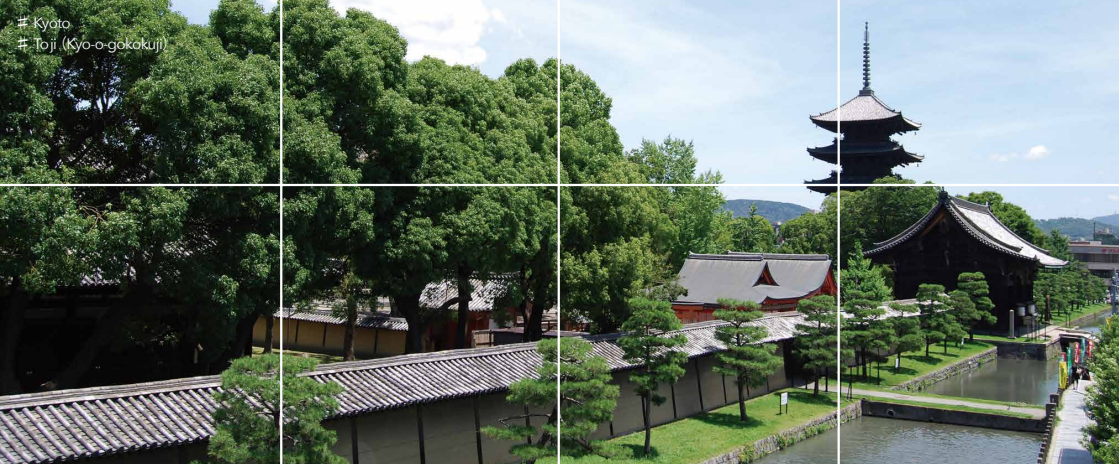
Find out about details
on participating department stores!

Check our
special site here



the Dragon Route

Kyoto
Toji (Kyo-o-gokokuji)



Kansai / Chugoku Areas



Japan

= 《 Guide to Depa-Chika 》 =

Kansai / Chugoku *Areas*

The Kansai area is popular for its Big 3 Cities spread across three prefectures: Kyoto, Osaka and Kobe. Osaka, with its unique ashy advertising boards and shop signs, is completely different to Kyoto. The port city of Kobe, meanwhile, is worth checking out for its exoticness. There are also tons of sightseeing spots to be enjoyed in Nara and Wakayama. Meanwhile, the Chugoku Area plays host to Setouchi, which has been dubbed "the Japanese Aegean Sea."



Kobe # NightView
KobePortTower



NaraPark

Photo courtesy of Nara Visitors Bureau

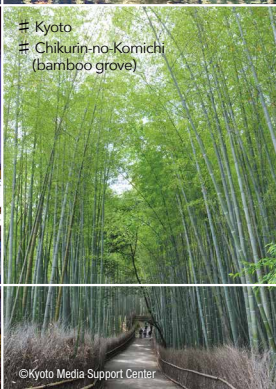


Wakayama
NachiFalls



Osaka
Dotonbori

©Osaka Convention & Tourism Bureau



Kyoto
Chikurin-no-Komichi
(bamboo grove)

©Kyoto Media Support Center






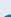

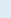






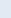

Okayama
Kurashiki



Hiroshima
Miyajima

Osaka Town Map

[Airport Access]

 Kansai International Airport	 JR Kansai Airport Rapid Service (approx. 65min)	Osaka Sta. / Umeda Sta.
	 Airport Limousine Bus (approx. 70min)	
	 Nankai Line Airport Express (approx. 45min)	Namba Sta.
	 Airport Limousine Bus (approx. 50min)	
	 JR Kansai Airport Rapid Service (approx. 45min)	Tennoji Sta.
 Airport Limousine Bus (approx. 70min)		
 Osaka International Airport (Itami)	 Monorail & Hankyu Line (approx. 30min)	Osaka Sta. / Umeda Sta.
	 Airport Limousine Bus (approx. 30min)	
	 Monorail & Hankyu Line (approx. 40min)	Namba Sta.
	 Airport Limousine Bus (approx. 30min)	
	 Monorail & Kita-Osaka Kyuko Line (approx. 55min)	Tennoji Sta.
	 Airport Limousine Bus (approx. 30min)	

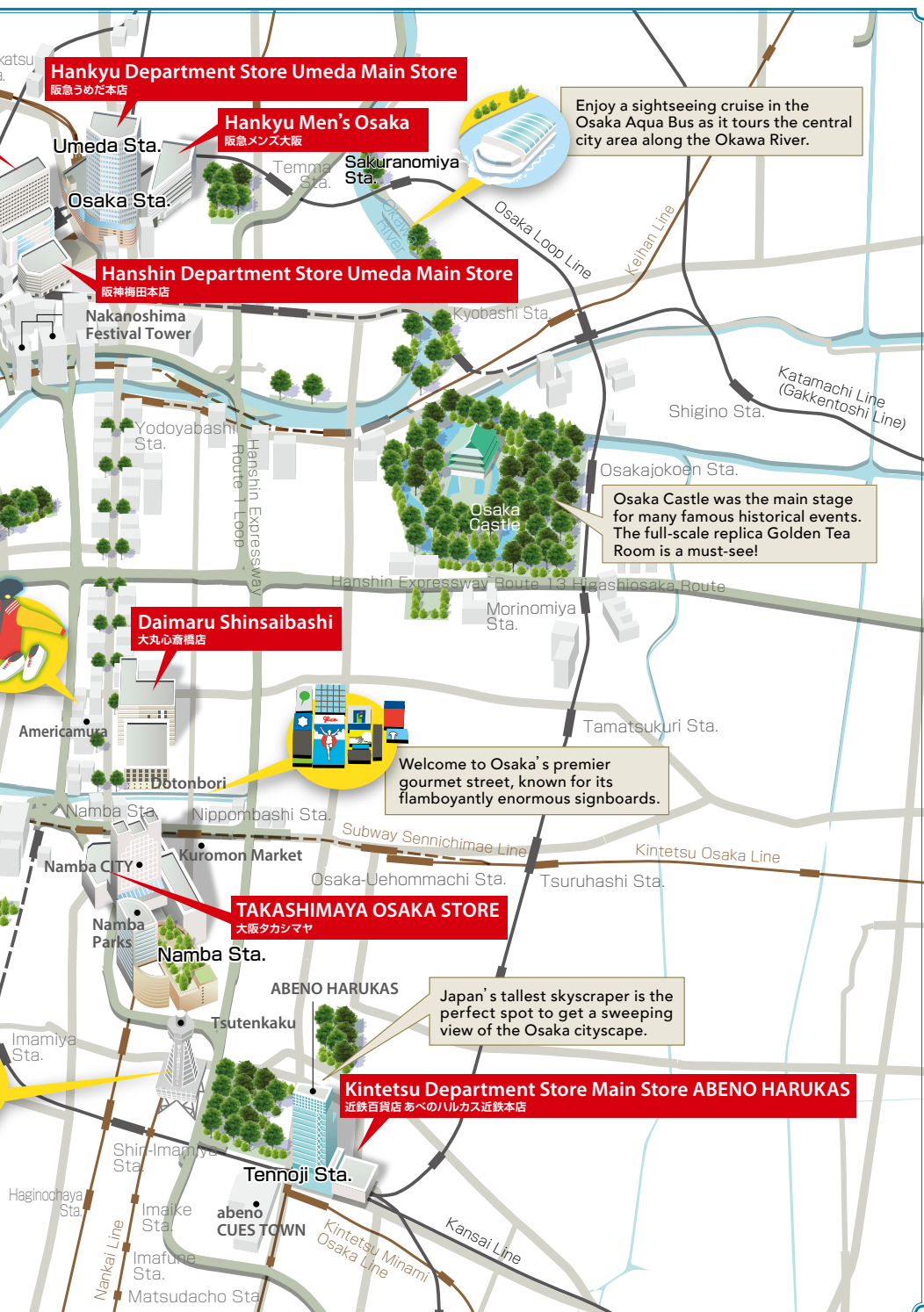
Daimaru Umeda
大丸梅田店

Umeda
Sky Building

This area draws in youth culture with its bustling merchandise shops and recycled clothing stores.

Whale sharks are truly a sight to behold! The nearby shopping mall and enormous Ferris Wheel are worth a visit as well.

You'll find Osaka's guardian deity Billiken enshrined in the top floor of Osaka's symbolic Tsutenkaku Tower.



The store with an array of delicious food located in Japan's tallest building

Welcome to the department store inside Abeno-Harukas, Japan's tallest building replete with observation deck, hotel and art gallery. Our Abeno Food City on B1F-B2F hosts various shops, some of which even have eat-in spaces, and also showcases a host of popular sweets and local cuisines making waves across Japan. It also houses a Japanese and Western liquor section with over 1,000 kinds of alcohol, including Japanese whisky.

1. From the Kansai region's breweries to the famous brand Dassai, we offer a range of sake popular both in Japan and overseas. 2. We have "taste and buy" events for sake from every Japanese region, featuring different brands each week. 3. These MACADAMIA CHOCO BULLETS (from 756 yen for 4) come from our BROOKLYN FORT store, the first of its kind in Japan. 4. Dotonbori Imai's Naniwa Flavor Kitsune Udon (810 yen per serving) can be induction-heated.



Abeno / 阿部野

Kintetsu Department Store Main Store ABENO HARUKAS



[近鉄百貨店 あべのハルカス近鉄本店]
abenoharukas.d-kintetsu.co.jp/

1-1-43 Abenosuji, Abeno-ku, Osaka-shi, Osaka ☎ +81-(0) 6-6624-1111 (switchboard)
B2-3.5F 10am-8:30pm / 4-11F 10am-8pm / 12-14F "ABENO HARUKAS Dining" Restaurant
Arcade 11am-11pm / B2F "ABENO Ichiba Restaurant" 10am-10pm Jan 1st Just outside the West Ticket Gate of Tennoji Metro Sta. / 1-min walk from the Central Ticket Gate of JR Tennoji Sta. / Just outside the West Ticket Gate of Kintetsu Osaka-Abenobashi Sta.

| Services offered |



This Kubota Manju Japanese Sake from Asahi Brewery (4,004 yen, 720ml) has a delicious smooth taste and flavor. This sake represents the peak of the Kubota brand, with only a limited number of bottles produced.



We attract with our wide product range, encompassing sake from the local Kansai region, across Japan, and more!



These cheese sweets,
offering a new sensation
in the mouth, are exclusive
to our store.



1. Umeda Cheese Labo, a store exclusive to Daimaru Umeda which develops sweets utilizing the charms of cheese, presents these cookies (1,080 yen for 8). White chocolate cheese cream and cheese cookies with a rich taste. 2. The buffet dinner at CHISO ZANMAI on the 14F (3,600 yen per adult). 3. Conveniently accessible, with several stations nearby.



A place to freely enjoy Japanese food! A department store loved by locals and tourists alike!

Our food area on B1F, bustling with local food shoppers, is abundantly stocked with products ranging from fresh foods to confectionery. We are also highly-rated for our eat-in space, which allows you to freely savor the flavors of popular Osaka shops. We also have a restaurant on the 14th floor which offers about 60 kinds of Japanese, western and Chinese dishes in an all-you-can eat format.

Umeda / 梅田

Daimaru Umeda

[大丸梅田店]

www.daimaru.co.jp/umedamise/



🏠 3-1-1 Umeda, Kita-ku, Osaka-shi, Osaka

☎ +81-(0) 6-6343-1231 (switchboard)

🕒 B2-9F 10am-8:30pm (until 9pm on Fri & Sat) / 10-13F, 15F 10am-8pm / 14F Restaurants 11am-11pm

🚶 Jan 1st 🚶 1-min walk from JR Osaka Sta.

| Services offered |



Our long-standing store has been renovated! We're packed with new gourmet items!

Our newly renovated Main Building reopened as recently as September 20th 2019. Among the 370 or so shops and new enterprises, our variety of foods garners particular attention. Our B1F hosts an abundance of new foods including sweets and deli items, while our Shinsaibashi Food Hall on B2F offers 13 eateries with 350 seats. As Shinsaibashi's new gourmet spot, we're already getting people talking.

Shinsaibashi / 心斎橋

Daimaru Shinsaibashi

[大丸心斎橋店]

www.daimaru.co.jp/shinsaibashi/



🏠 1-7-1 Shinsaibashi-suji, Chuo-ku, Osaka-shi, Osaka

☎ +81-(0) 6-6271-1231 (switchboard)

🕒 10am-8:30pm / Food Hall 10am-11pm / Restaurant Floor 11am-11pm (hours vary by floor and shop)

🚶 Jan 1st 🚶 Directly connected via underground passage to Exit 4 of Shinsaibashi Metro Sta.

| Services offered |



Attractive for its multitude of flavors and bright packaging!



1. ISHIYA, famous for the Hokkaido cookie Shiroi Koibito, has opened its first Kansai store with us! ISHIYA SHINSAIBASHI's Saqu Assortment (1,944 yen for 18) relies purely on Hokkaido ingredients. 2. Omi Imazu Nishitomo, on the Main Building B1F, presents this Thin-grilled Eel Bento Box (4,200 yen), unique for its 'tare' sauce and charcoal fragrance passed down through the generations. 3. Our striking art deco architecture.



Make noodles you'll love
from 2,860 possible combinations!

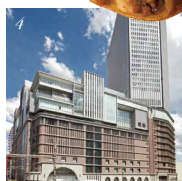
1



2



3



1. MOMOFUKU NOODLE, developed in collaboration with Nissin Foods. 2. These Oh!Sauce Okonomi Sauce Manju Soba (250 yen each) from Otafuku Sauce offer a smooth blend of soup-stock-flavored dough and sauce. 3. This Curry Pannohi (Curry Bread Day) emerged from a collaboration with House Foods. The curry bread (378 yen each) comes in two varieties: mild and spicy. 4. Proudly offering the largest number of brands in the Kansai region.

Our much talked-about product collaborations are a must! Numerous limited products ideal for souvenirs.

With a multitude of limited products, we are the department store which makes souvenir hunting fun! We have a long line of attention-grabbing products, especially on B1F, which hosts both Sweets Street, developing premium sweets in collaboration with popular western confectioners and sweet manufacturers, and a food section filled with various product collaborations including curry bread and noodles.

These non-fried momofuku noodles from MOMOFUKU NOODLE (540 yen per meal) contain both wholemeal flour and dietary fiber. You may customize them as you wish.



Umeda / 梅田

Hankyu Department Store

Umeda Main Store

[阪急うめだ本店]

www.hankyu-dept.co.jp/fl/s/english/



8-7 Kakuda-cho, Kita-ku, Osaka-shi, Osaka
☎ +81-(0) 6-6361-1381 ☺ Sun-Thu 10am-8pm / Fri & Sat 10am-9pm 🗓 Jan 1st
📍 2-min walk from JR Osaka Sta. and Umeda Metro Sta. / 3-min. walk from Hankyu Osaka-umeda Sta.

| Services offered |



Hanshin Department Store Umeda Main Store

[阪神梅田本店]

www.hanshin-dept.jp/hshonten/english/index.html

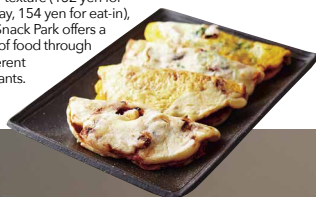
1-13-13 Umeda, Kita-ku, Osaka-shi,
Osaka ☎ +81-(0) 6-6345-1201

10am-8pm (opening hours may vary by day and floor) 🗓 No holidays 🚶 3-min walk from JR Osaka Sta. / 1-min walk from Hanshin Osaka-umeda Sta. / 2-min walk from Umeda Metro Sta.

| Services offered |



Starting with Osaka's famous ikayaki with their unique and irresistible springy texture (152 yen for takeaway, 154 yen for eat-in), B1F's Snack Park offers a variety of food through 15 different restaurants.



A freshly-energized new store with a huge collection of daily foods

At our recently-renovated store reopened in June 2018, you will find an even more complete foods section. Our 1F offers a large variety of breads and wines, while our B1F's Snack Park has also returned. At the 15 restaurants gathered within you may enjoy Japanese food such as sushi, ramen and Osaka's very own ikayaki grilled squid. As our B1F's Hanshin Food Hall presents a complete selection of bento boxes, why not take some of the marvelous food back to your hotel!

1. "Fast," "cheap" and "really delicious." That's why locals love Hanshin Snack Park. 2. Enjoy a multitude of diverse Japanese bento boxes in B1F's Hanshin Food Hall. 3. Our 1F's Pan (Bread) World, bringing you a full bread lineup, including select shops. 4. Hanshin Umeda Main Store has only just been renovated. Our night view also appeals!

2



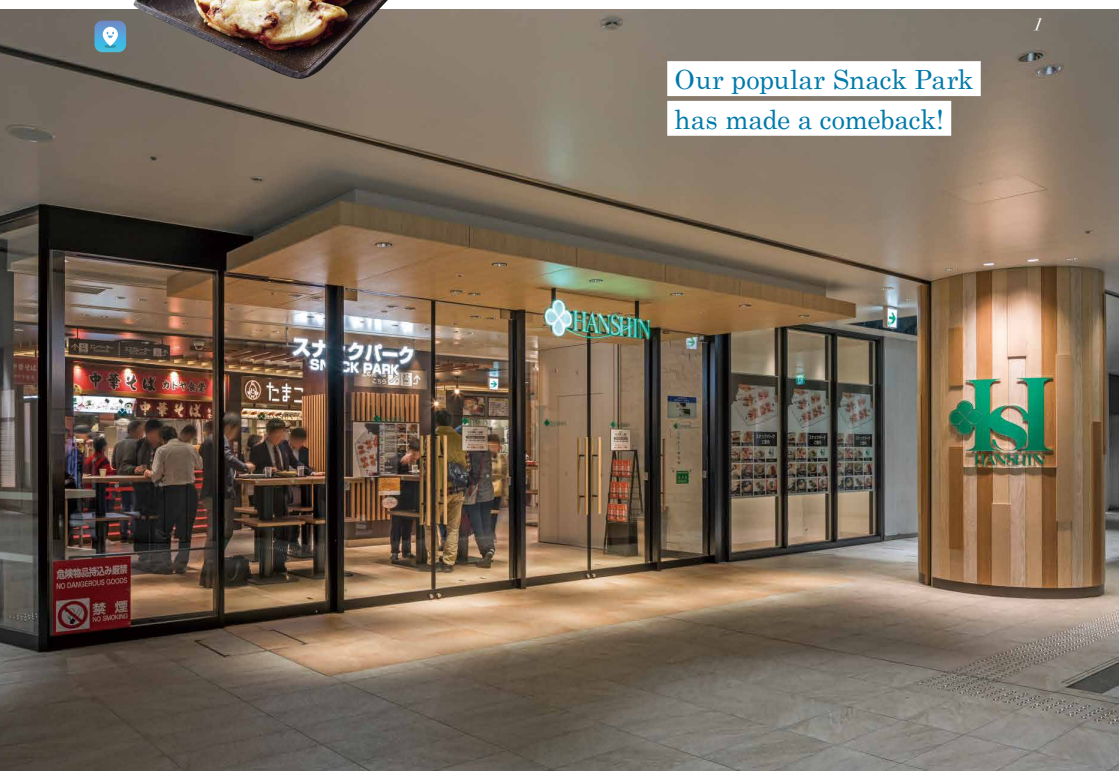
3



4



Our popular Snack Park
has made a comeback!



Savor the tastes of Kyoto's famous shops with limited products and more!

We derive our appeal from store sections which offer you something new every time you visit, such as the Seasonal Cakes Corner which renews its lineup at least twice a month. Inside GYOZA OHSO, popular throughout Japan, you will find Kyoto Takashimaya limited products, beginning with the Petit Series. Our 7F Dining Garden Kyokairo, meanwhile, presents a selection of famous restaurants including the century-old Grill Capital Toyotei.

1. We always offer Kyoukasho cakes (378 yen) from five companies. Single-unit purchases allowed.
2. GYOZA OHSO's Shrimp Gyoza (648 yen), exclusive to Kyoto Takashimaya, each make extravagant use of a single shrimp.
3. At Grill Capital Toyotei you can enjoy a popular prix-fixe menu including their signature dish, Hyakunen Yoshoku hamburger steak (1,341 yen), or wagyu beef steak.
4. Directly connected to Hankyu Kyoto Kawaramachi Station.



2



Store Exclusive



Kyoto / 京都

TAKASHIMAYA KYOTO STORE

[京都タカシマヤ]

www.takashimaya.co.jp/kyoto/store_information/



52 Nishi-iru, Shin-cho, Kawaramachi, Shijodori, Shimogyo-ku, Kyoto-shi, Kyoto
☎ +81-(0)75-221-8811 ☎ 10am-8pm / Restaurant Arcade 11am-9:30pm (Last order times vary between shops) 🗓 Jan 1st
📍 Directly connected to Hankyu Kawaramachi Sta. / 5-min walk from Keihan Gion-shijo Sta.

| Services offered |



Marukyu Koyamaten Saito-scented Matcha (1,275 yen per 20g tin) is exclusive to Kyoto Takashimaya, and something you'll want to enjoy with your cake!



Store Exclusive

Our Japanese sweets allow you to experience the four seasons of the ancient capital of Kyoto with all five senses!



An assortment of quintessentially Kyoto products, including matcha and sake

We appeal through our great location inside the building adjoining Kyoto Station. We are also the place to come for typical Kyoto souvenirs such as matcha and Japanese sake. Among our many noteworthy points are new brands introduced by traditional Japanese confectioners, and Japanese and Western confectionery products exclusive to Kyoto. Our bentos on the basement food floor also make for good travel companions.



1. Judaime Ihei Kaho, a new brand from traditional confectioner Sasaya Iori. This Amber Palette Blue Sky Sketch (1,080 yen for 4) expresses a clear blue sky through use of agar-based Kohakukan. 2. Sake from over 120 breweries, naturally including those based in Kyoto, can be found in our liquor corner on B1F. 3. Hollandsche Kakao-Stube's Matcha Baumkuchen (1,944 yen each).

Different events each day and all kinds of exclusive goods!

We are directly connected to both Karasuma and Shijo Stations via underground passage, thus comfortably accessible even on rainy days. B1F Gochiso Paradise hosts daily events including a tuna filleting display and sale, and confectionery promotions. It also offers numerous goods exclusive to either our store or local region. We offer a comprehensive Wi-Fi service in all buildings..



1. Kyoto Kitayama Malebranche's Opaque Matcha Sweets, Langue de Chat (1,200 yen for 8) combine Uji tea-flavored langue de chat and white chocolate in a sandwich. 2. GATEAU FESTA HARADA's Tigresse Matcha (810 yen for 3) is exclusive to the Daimaru Kyoto store. 3. We adjoin Karasuma Station and are conveniently accessible.

JR KYOTO ISETAN

[ジェイアール京都伊勢丹]
www.isetan.mistore.jp/kyoto.html



1. Higashi-Shiokoji, Shiokoji-Sagaru, Karasuma St., Shimogyo-ku, Kyoto-shi, Kyoto ☎ +81-(0)75-352-1111
⑩ 10am-8pm / Restaurants 11am-10pm / Open View
Restaurant 11am-11pm (Last order times vary between shops)
1. Irregular holidays 2. Directly connected to Kyoto Sta. (JR, Kintetsu, Kyoto Municipal Subway lines)

| Services offered |



Daimaru Kyoto

[大丸京都店]
www.daimaru.co.jp/kyoto/



1. 79 Tachiurinishi-machi, Takakura Nishi-iru, Shijo-dori, Shimogyo-ku, Kyoto-shi, Kyoto ☎ +81-(0)75-211-8111 (switchboard) ⑩ 10am-8pm / 8F Restaurants and neighboring shops 11am-8pm (last orders at 7:30pm) 1. Jan 1st 2. 1-min walk from Hankyu Kyoto Line Karasuma Sta. (Directly connected via underground passage) / 2-min walk from Kyoto Municipal Subway Shijo Sta.

| Services offered |



Search for souvenirs in our Yamatoji shop which promotes the charms of the Nara locality

Our Yamatoji shop, in which the charms of the ancient capital Nara are gathered, features sake from 30 local brewers as well as hordes of famous Nara products which are popular throughout Japan. So why not come and encounter our carefully-nurtured products born from Nara's rich natural landscape, including cutely-packaged confectionery, narazuke (vegetables pickled in sake lees), and dried foods?

Nara / 奈良

Kintetsu Department Store

Nara Store

[近鉄百貨店 奈良店]

www.d-kintetsu.co.jp/store/nara

📍 2-4-1 Saidaiji Higashi-machi, Nara-shi, Nara
☎ +81-(0)742-33-1111 🕒 10am-8pm 📅 Jan 1st
🚶 3-min walk from Kintetsu Yamato-Saidaiji Sta.
North Exit



| Services offered |



Confectionery

with a new sensation –
and a cute Nara-esque package!



1. Lilonte's choco-ne (648 yen each) consist of Japanese ramune soft candy sweets wrapped in flavored chocolate made with fruits from Nara, and other ingredients. 2. A full-bodied fruity scent and the velvety taste of junmai sake (no added alcohol or sugar) combine for a deep, rich flavor: Yamatsuru Junmai Daiginjo Yamatoji Sake Omoi (2,750 yen, 720ml)
3. A short walk from Kintetsu Yamato Saidaiji Station.



The only department store
in Kansai with this product lineup of
Kido local sake, popular throughout Japan.

Attractive for our varied lineup of famous and special Wakayama products

If you are looking for souvenirs in Wakayama, our BIF Kishuji Uriba section is just for you! Inside you will find hordes of processed fruit products, including local Arita mikan oranges, as well as confectionery with panda-motif packaging. Furthermore, our liquor shop offers local Wakayama sake and plum wine in addition to Japanese wine, with sake-tasting and sommelier license-holders among our sales staff.

Wakayama / 和歌山

Kintetsu Department Store Wakayama

[近鉄百貨店 和歌山店]

www.d-kintetsu.co.jp/store/wakayama/



📍 5-18 Tomoda-cho, Wakayama-shi, Wakayama
☎ +81-(0)73-433-1122 (switchboard)
🕒 10am-7pm 📅 Jan 1st, Irregular holidays
🚶 1-min walk from JR Wakayama Sta.

| Services offered |



1. Kido Junmai Daiginjo (2,486 yen for 1.8L, 1,243 yen for 720ml) has quite a following among Japan's sake lovers. 2. Our Hello Kitty Kishu Nankoubai Lunch Case: 8% Honey, emblazoned with the lovable Kitty-chan character (1,080 yen, 120g), and Temari Mikan (791 yen) making extravagant use of whole mikan oranges. Ajikoi Shibori flavor is also available (421 yen, 80ml). 3. We adjoin JR Wakayama Station.



Search for great foods on our basement floor into which Kobe's charms have been condensed!

Welcome to the store whose modern-classical style oozes real presence. If you wish to purchase genuine Kobe food, simply head to our B1F food floor, Kobe foods style. Here you can find an abundance of products spread across four areas: Table Plus+, with its Kobe sweets, eat-in zone and cafe; the deli section; the flavors of traditional shops; and fresh fish and groceries.

Kobe / 神戸

Daimaru Kobe

[大丸神戸店]

www.daimaru.co.jp/kobe/

40 Akashimachi, Chuo-ku, Kobe-shi, Hyogo

☎ +81-(0)78-331-8121 🕒 10am-8pm 9F Restaurants

11am-9pm 🗓 Jan 1st 🚶 3-min walk from

Motomachi Sta. (JR and Hanshin lines) / Near subway

Kyukyoryuchi-Daimarumae Sta.



| Services offered |



Yakushima pesticide-free tea makes you really feel the taste of Japan.



2



3



1

1. Yakushima Black Tea from ITO EN - Le Monde du Thé (1,320 yen for 10 bags) is Japanese black tea cultivated with no pesticides or chemical fertilizer. 2. Kobe Rokkei Mini Gaufre from Kobe Fugetsudo (440 yen for 6), with packaging depicting famous Kobe places, make for ideal souvenirs. 3. A Sannomiya landmark with an exotic air.

Both seasonal items and limited items can be counted among our collections. These are local Saijo Sake products which are popular on brewery tours.



We are in a fine location near the Atomic Bomb Dome World Heritage Site.

We appeal with our large collections of Hiroshima brands and small selection of brands from across Japan. We also have tables for you to enjoy the food that you purchase in-store. Our liquor section has 80 types of Japanese sake, which focus on Hiroshima and its breweries such as Saijo and Takehara. We also have popular Hiroshima lemon products that are sold only in SOGO HIROSHIMA.

Hiroshima / 広島

SOGO HIROSHIMA

[そごう広島店]

www.sogo-seibu.jp.e.l.d.hp.transer.com/hiroshima/



6-27, Motomachi, Naka-ku, Hiroshima-shi,

Hiroshima ☎ +81-(0)82-225-2111

🕒 10am-8pm / Main Bldg. 10F Restaurants 11am-

10pm 🗓 Irregular holidays 🚶 1-min walk from

Hiroshima Electric Railway Kamiyacho-West Sta.

| Services offered |



2



3

1. Kamotsuru Special Gold Daiginjo Sake (600 yen, 180ml; 1,078 yen, 300ml; 1,516 yen, two 180ml bottles in a Marukaku gift box). 2. GATEAU FESTA HARADA's Tigresse Citron Lemon Cake (270 yen each), using Setoda lemon in both its dough and its chocolate, is exclusive to our store. 3. We are in a great city-center location.

Welcome to our complete selection of popular foods from the “Sunny Country”: Okayama!

Okayama's famous products are all gathered in the Tenchika Food Garden on B1F. As Okayama is known as the “Fruit Kingdom,” our Okayama fruits which are all grown with the aid of Okayama's glorious sunshine, are especially popular. Our confectionery made with seasonal fruits produce a deliciousness that can only be sampled here.



1 A voluminous tart packed with seasonal fruits.



1. This Seasonal Fruit Tart (from 3,024 yen) from our FRUITS-J BOUTIQUE is blessed with Okayama fruit and a taste that only a specialty fruit shop can offer. 2. Okayama's popular shops are gathered in the Hare no Kuni Kitchen Food Court, meaning you will definitely find something you want to eat! 3. We also have a bus terminal annex.

We are right at the side of Kurashiki Station bus terminal and conveniently accessible.

We moved to the east side of Kurashiki Station in 2008. Our B1 food floor, named the Shokusaikan, offers a plentiful supply of fresh food, Japanese and Western confectionery, liquor and groceries. We have many local brands such as kibidango maker Koeido and Otemanju. Many souvenirs are bought here by our happy crowds of customers.



1 A signature Okayama brand renowned for its scent of amazake.



1. Otemanju (from 756 yen for 10) from Otemanju Inbeya, a brand with over 180 years of history. 2. We have a full lineup of local sake, including products which use Omachimai, sake rice of the very highest quality. 3. We face the bus terminal on the east side of Kurashiki Station.

OKAYAMA TENMAYA

[天満屋岡山本店]

www.tenmaya.co.jp/okayama/



■ 2-1-1 Omotecho, Kita-ku, Okayama-shi, Okayama
☎ +81-(0) 86-231-7111 ⌚ 10am-7:30pm 🗓 Jan 1st
🚶 [By Okayama Electric Tramway] From Okayama Sta., get on Seikibashi-bound tram, get off at Yubinkyoku-mae Stop (about 5-min. ride), walk about 5 min. / Get on Higashiyama-bound tram, get off at Kencho-dori Stop (about 5-min. ride), walk about 5 min.
🚶 [By Bus] From Okayama Sta., get on Tenmaya-bound bus, get off at Tenmaya Bus Station Stop (about 10-min. ride), near bus stop

| Services offered |



KURASHIKI TENMAYA

[天満屋倉敷店]

www.tenmaya.co.jp/kurashiki/



■ 1-7-1 Achi, Kurashiki-shi, Okayama
☎ +81-(0) 86-426-2111 ⌚ 10am-7pm / 6F Restaurants 11am-10pm 🗓 Jan 1st
🚶 1-min walk from JR Kurashiki Sta. South Exit

| Services offered |





Image Provided by: Fukuoka City



== 《 Guide to Depa-Chika 》 ==

Kyushu *Area*

The Kyushu Area is comprised of 7 prefectures, each of which has developed its own distinct culture. The largest city on the island is Fukuoka, where yatai (food stall) culture is still a permanent fixture on the streets of Tenjin, Hakata, Nakasu and Nagahama today. Fukuoka is thus a city teeming with vitality. Meanwhile, Kumamoto is noted for a magnificent natural landscape capable of leaving you wide-eyed.



Fukuoka
NokonoshimaIslandPark

Image Provided by: Fukuoka City



Oita # BeppuOnsen



Kagoshima
Sakurajima

Photo courtesy of Kagoshima Prefectural Visitors Bureau



Kumamoto # GlobalGeoparks
Aso

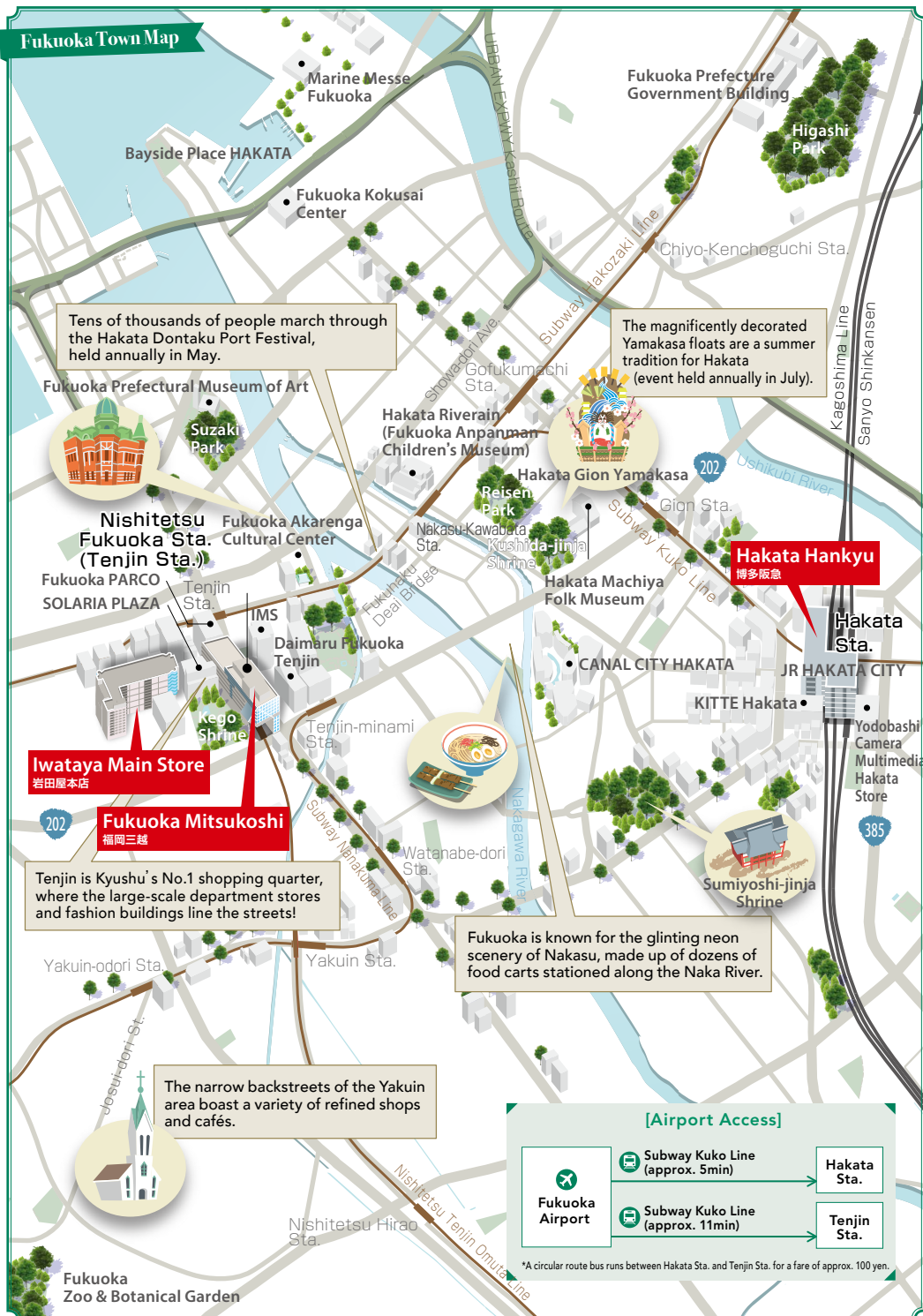


Fukuoka # HakataGionYamakasa
IntangibleCulturalHeritage # July



Miyazaki
Takachiho

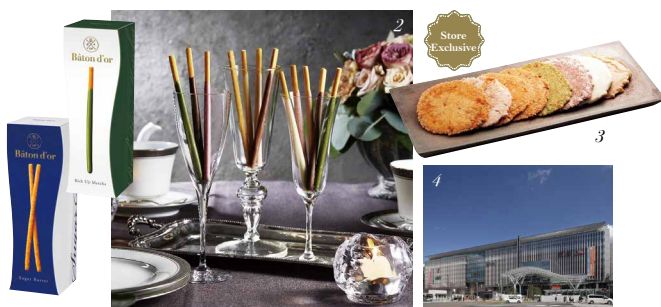
Fukuoka Town Map



The only one of its kind in Kyushu!
Relish this very special Godiva!



Godiva, the chocolate brand loved around the world, has opened three new concept stores in Japan—and we host one of them! Your heart is bound to flutter at the sight of this glorious space lined with special sweets.



Hakata / 博多

Hakata Hankyu

[博多阪急]

www.hankyu-dept.co.jp/hakata/fl/english/



🏠 1-1 Hakataeki Chuo-gai, Hakata-ku, Fukuoka-shi, Fukuoka ☎ +81-(0) 92-461-1381
⌚ All buildings 10am-8pm / Fri & Sat B1-4F 10am-9pm, 5-8F 10am-8pm 📅 Irregular holidays 🚶 Directly connected to JR Hakata Sta. / 1-min walk from Hakata Metro Sta.

| Services offered |



1. Come to ATELIER de GODIVA for a host of special sweets through which the chef expresses elements of both the delicious and the surprising. 2. Bâton D'or is exclusive to Hakata Hankyu. 3. Premium Menbei, with pollock roe kneaded into the dough. 4. We are a short distance from Hakata Station and its bullet trains.

Full of uniquely fun things you can only find here!

We are adjacent to JR Hakata Station and thus a convenient place for souvenirs. Our B1F's Umachika area sells Japanese and Western spirits and deli items, while you can also dine in the Hankyu Umaka Shokudo. We have several shops making their debuts in the Kyushu region, and we even put on performances by our HAKATA KITCHEN BAND group (except on holidays and during the busy season)! In short, we pride ourselves on our highly unique offerings.

The largest-scale department store in Kyushu with a massive collection of delicious Fukuoka products.

We are a large-scale department store with a host of long-standing Fukuoka shops inside. Our appeal lies in our sheer variety of products, including pure sake, seasonal goods and, not least, our specialty store for the internationally popular Dassai sake brand. Visit us to savor superb and popular local products such as Horaku Manju, freshly baked in-store, and the wasabi-accented Nankan Inari deep-fried tofu and rice dish!

Fukuoka / 福岡

Iwataya Main Store

[岩田屋本店]

www.iwataya-mitsukoshi.com/
i/english/



📍 2-5-35 Tenjin, Chuo-ku, Fukuoka-shi, Fukuoka
☎ +81-(0)92-721-1111 ⌚ 10am-8pm / *Eat-in
Paradise* Annex Restaurant Arcade 11am-10pm
🗓 Irregular holidays 🚶 5-min walk from Nishitetsu
Fukuoka (Tenjin) Sta., and Tenjin Metro Sta.

| Services offered |

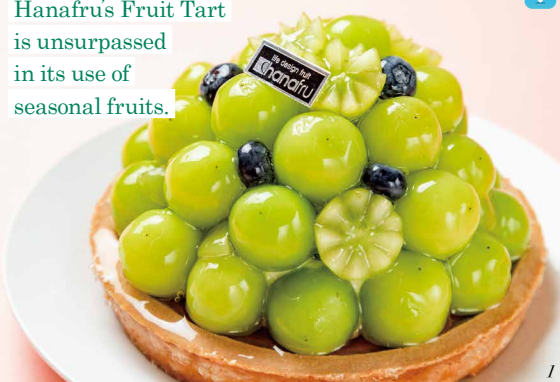


We are the only department store in the land to host a Dassai store. You can even do sake tasting here!



1. Popular items from our Dassai store include Junmai Daiginjo Dassai Migaki Niwari Sanbu (left, 5,555 yen, 720ml) and Sanwari Kubu (right, 2,706 yen, 720ml). Smaller 180ml and 300ml bottles available. 2. Tatsumi Zushi's Sakeroku-zushi (1,211 yen) is a set comprised of nankan inari (wrapped in deep-fried bean curd) and maki-zushi (wrapped in laver). 3. Horaku Manju, loved by the locals, come in two types: white bean paste and strained bean paste (100 yen each).

Hanafru's Fruit Tart is unsurpassed in its use of seasonal fruits.



Enjoy eating the fruits of the Japanese seasons at the busiest quarter in Fukuoka.

We are located in bustling Tenjin, at the heart of Fukuoka City. Our greengrocer-managed "hanafru" offers extremely popular fruit tarts teeming with seasonal fruit. Our substantial product lineup, including limited-quantity honey produced in our rooftop beehives and Tonkatsu Maisen exclusive to Fukuoka, also appeals.

Fukuoka / 福岡

Fukuoka Mitsukoshi

[福岡三越]

www.iwataya-mitsukoshi.com/
m/english/

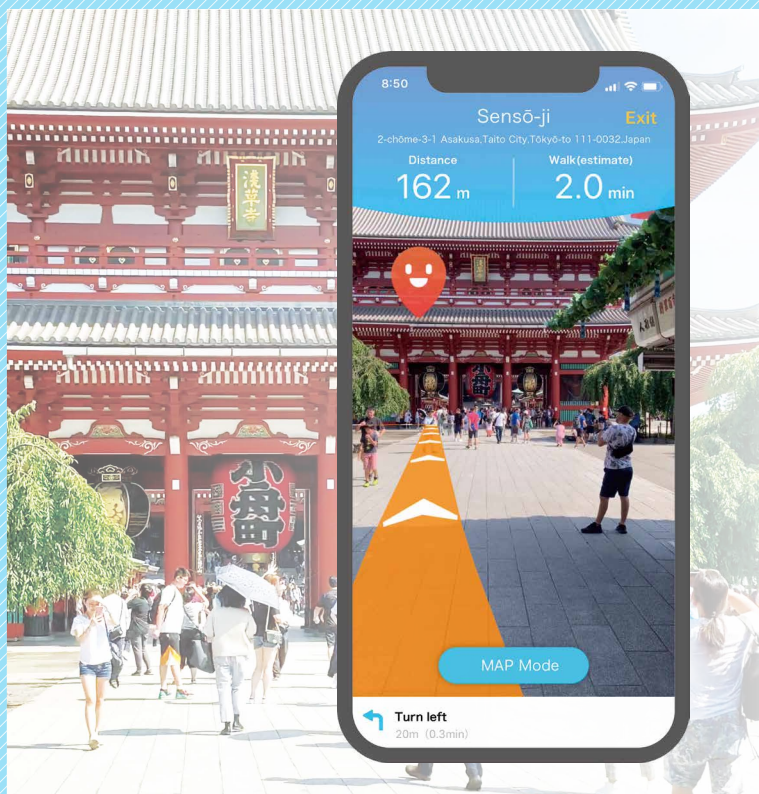


📍 2-1-1 Tenjin, Chuo-ku, Fukuoka-shi, Fukuoka
☎ +81-(0)92-724-3111 (main switchboard)
⌚ 10am-8pm 🗓 Irregular holidays
🚶 Directly connected to Nishitetsu Fukuoka (Tenjin) Sta. / 3-min walk from Tenjin Metro Sta. / A short distance from Tenjin-minami Metro Sta.

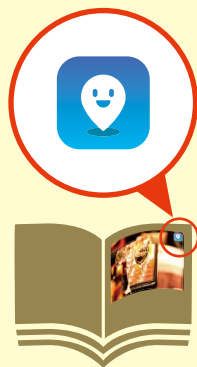
| Services offered |



1. A Shine Muscat Tart (3,240 yen, price may vary seasonally). The ever-popular Fruit Tart is available for 2,000 yen. 2. Tonkatsu Maisen's Pork Fillet Cutlet Sandwich (843 yen for 6). Mini burgers (from 195 yen each) are also popular. 3. Labelle's Fukuoka Tenjin Honey (from 972 yen, 36g) is a limited-quantity product direct from beehives atop the Fukuoka Mitsukoshi roof.



Scan the images with PinnAR to navigate to the destinations.



Look for images with the PinnAR logo!

Use PinnAR to easily reach department stores !

1 Download the app “PinnAR”.

AR navigation app for travelers!
Reach your destination without confusion!



2 Select “Image Scanner” from and scan the image .



3 Let the AR navigation app take you to your destination!





Shopping Pleasure!

Shop to your heart's content!



Superb items you can only find in Japan

Japanese department stores may be popular for their “depa-chika” basement food floors, which offer several items exclusive to Japan. But their attractive points are not confined to gourmet items and sweets alone! Many delightful shopping experiences likely await you on the other floors too, with their vast array of products and exhibitions of Japanese hospitality.

Point 01

Cosmetics

Select the cosmetics for you!

Cosmetics floors are the ones female customers cannot afford to miss. They not only offer the latest trend-setting items but also the joys of beauty counseling from specialist beauty advisors. They also have measuring instruments to check the condition of your skin.



T's Beaut Base, TAKASHIMAYA OSAKA
STORE (p.59)



Point 03

Living and Kitchen Goods

Lots of famous handmade items!

Japan is a country with a strong culture of "monozukuri" or handmade items, and department stores naturally display a lot of them. In recent years, the trend has been for prominent manufacturers to become more design-conscious for a new generation and thus give their products a younger look, which is proving popular.

Western Tableware Section, Tower Building 9F, Kintetsu Department Store Main Store ABENO HARUKAS (p.58)



Amakusa Ceramics "Higo Rokka" small plate selection, Ceramics Section, Tsuruya Department Store (p.61)



JAPAN EDITION and Re-mix STYLE, Ginza Mitsukoshi (p.56) / 1. Shun TM Santoku (19,800 yen, 180mm) 2. Shun TM Utility (13,200 yen, 165mm)



JAPAN EDITION and Re-mix STYLE, Ginza Mitsukoshi (p.56)



Point 04

Menswear and Accessories

TAKE-UP, Kintetsu Department Store Main Store ABENO HARUKAS (p.58)



Looking for jewelry with a mature feel?

In Japanese, the words "hare no hi" denote a special day such as an anniversary. Providing those vital accessories for your "hare no hi" is another department store forte. You may even encounter new accessories such as earrings and necklaces made from the latest techniques.

Point 02

Accessories



CREATORS, Hankyu Men's Tokyo (p.57)



Specialty department stores for men!

You might think of department stores as places to pique a woman's interest, but in Tokyo and Osaka you can actually find specialty department stores for men! Naturally, most of their floors are packed with items for men.



GARAGE D.EDIT, Hankyu Men's Osaka (p.60)

If you're looking for traditional Japanese craft items to use in everyday life, here's the place!

The continuous love for our popular department store clearly transcends age groups. Our 7F Living Interior Floor offers a host of traditional Japanese craft items of both outstanding functionality and beauty, adding color to your daily life and sophistication to your overall lifestyle. Whether you wish to treat yourself or buy a present for your family, if you are looking to encounter distinctly Japanese souvenirs, here is the place to come.

1. A lipped bowl, sake cup and chopstick rest from traditional Toyama metal-casting manufacturer Nousaku. 2. JAPAN EDITION, an ode to Japanese beauty, and Re-mix STYLE, with its household goods adding color to daily life, are both in-store. 3. Towel handkerchiefs from TENERITA, the brand which handles items made from organic cotton. 4. We adjoin Tokyo Metro Ginza Station.



3



Ginza / 銀座

Ginza Mitsukoshi

[銀座三越]

www.mitsukoshi.co.jp/g/int/



4-6-16 Ginza, Chuo-ku, Tokyo

+81-(0)3-3562-1111

10am-8pm (until 7:30pm on Sun) / 11 & 12F Restaurants 11am-11pm (until 10:30pm on Sun) Jan 1st Directly connected to Tokyo Metro Ginza Sta. / 5-min walk from Exit 9 of Ginza-itchome Metro Sta. / 9-min walk from the Chuo and Ginza Exits of JR Yurakucho Sta.

| Services offered | *We convert foreign currency into Japanese yen.



This OBai Bag courtesy of Katayama Bunzaburo Shoten has been colored with the traditional Bai-shibori tie-dyeing technique. Its impactful design can help accent your fashion coordination.

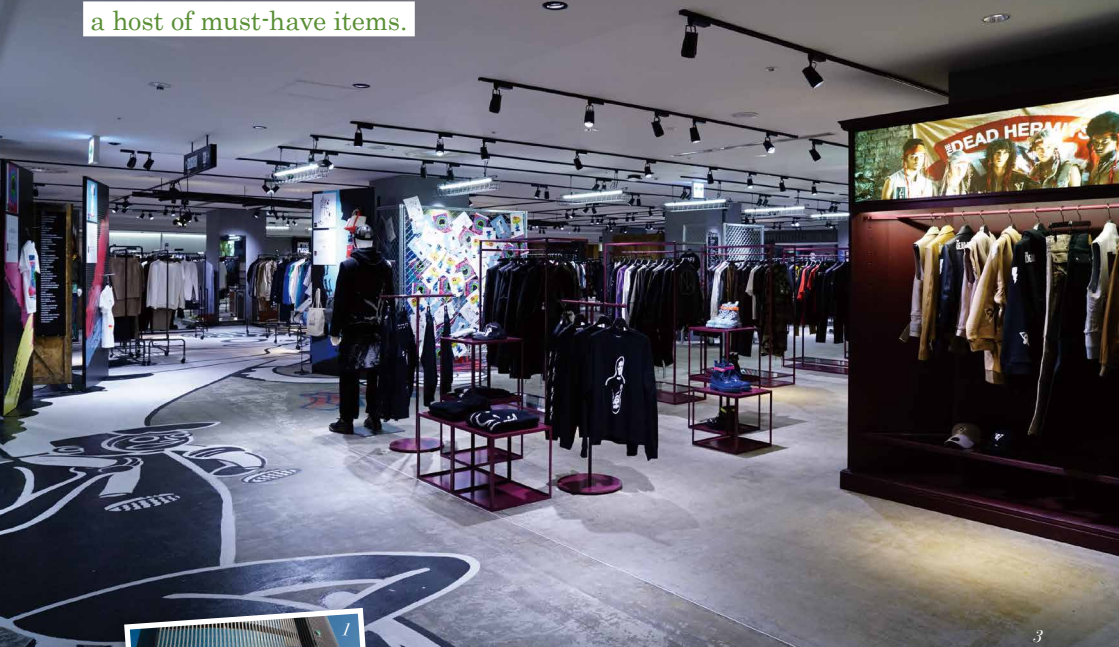


Elegant items realized through master craftsmen's techniques continue to be loved across generations.





Emphasizing “men”. Bringing together
a host of must-have items.



/ Located a short distance from Yurakucho Station, our newly-renovated store reopened in March 2019, offering enhanced specialization and individuality.

Yurakucho / 有楽町

Hankyu Men's Tokyo

[阪急メンズ東京]
www.hankyu-dept.co.jp/
mens-tokyo/english/



🏠 2-5-1 Yuraku-cho, Chiyoda-ku, Tokyo
☎ +81-(0) 3-6252-1381 ⌚ 11am-8pm
📅 Irregular holidays 🚶 1-min walk from
Ginza Exit of JR Yurakucho Sta. / Exit C4 of
Tokyo Metro Ginza Sta., Exit A0 of Tokyo
Metro Hibiya Sta.

| Services offered |



/ We proudly present our extensive range of products encompassing top international brands and noteworthy Tokyo Creators brands.

2. This section is at the cutting edge of men's beauty. Try out the products and test how comfortable they are. 3. 4. 5. We have put together a fine collection of select Japanese and international brands on our 6F in the form of GARAGE D'EDIT. Here, you will not only find the awesomely individualistic ALMOSTBLACK (5), the brand drawing its name from the "kasshoku" brown color adored by Japanese for generations, but also SULVAM (4), the brand exclusive to Japan which embraces flexible thinking in the quest to create new fashions.



**Treasuring your values. Giving you
more freedom to become “you”.**

Formed around the concept of “an adventure base for creatively conscious men,” we are the largest specialty men's fashion building in the area. In addition to our brandwear strictly selected from domestic and international markets, which contains many an item to excite the mature male customer, we offer a comprehensive men's beauty corner.

Garnering attention as the place to buy quintessential “Shibuya” items

Our store is in a prime location, just a short distance from the iconic Shibuya Scramble Crossing. Our “A” Building B1F, with its collection of select shops showcasing specially selected ingredients and presents from across the country, contains scores of perfect souvenirs such as Shibuya Sake, a label exclusively limited to our department store. Our Tsuchinao Shikki bottles, available in red, black and three patterns, are also popular.

Shibuya / 渋谷

SEIBU SHIBUYA

[西武渋谷店]

www.sogo-seibu.jp.e.ld.hp.transer.com/shibuya/



21-1 Udagawa-cho, Shibuya-ku, Tokyo

☎ +81-(0) 3-3462-0111 (switchboard)

🕒 10am-9pm (Mon-Sat), 10am-8pm (Sun & holidays)

🕒 Irregular holidays 🚶 3-min walk from Shibuya Sta. (JR, Keio, Tokyo Metro, Tokyu lines)

| Services offered |



1. Tsuchinao Shikki's Japanese Lacquered Umbrella Bottle (6,600 yen each) is a stainless steel vacuum insulation bottle coated in natural lacquer and with outstanding heat- and cold-retention properties.
2. Japanese sake (990 yen each, 300ml; 2,200 yen each, 720ml) with labels bearing Shibuya Scramble Crossing and the Hachiko Statue, two symbolic local landmarks.
3. We are well-located near the station.

A foldable umbrella serves as the design motif.



World-class Osaka products from the hands of master craftsmen!



1. Osaka Suzuki's tea urn (132,000 yen) was one of the presents given at the G20 Summit. Sakai Toji's small knife (4,950 yen) and nail clippers (825 yen each) are also pictured. 2. The Panier Series developed through "TAKE-UP" 3. new techniques, includes the K18YG Cubic Zirconia Pierced Earrings (36,300 yen) and necklace (diamond-fitted, 44,000 yen). 4. Located inside Abeno Harukas, the tallest building in Japan.



A collection of Japanese brands proud of their careful, reliable techniques.

Our Tower Building's 9F has traditional products from Sakai Hamono and Osaka Naniwa Suzuki, and 1F has "TAKE-UP," with its array of accessories born from the delicate techniques of expert Japanese craftsmen. Both floors are teeming with made-in-Japan items. Our abundant selection means you are certain to find something you like.

Abeno / 阿部野

Kintetsu Department Store Main Store ABENO HARUKAS

[近鉄百貨店 あべのハルカス近鉄本店]
abenoharukas.d-kintetsu.co.jp/



📍 1-1-43 Abenosuji, Abeno-ku, Osaka-shi, Osaka
☎ +81-(0) 6-6624-1111 (switchboard) 🕒 B2-3.5F 10am-8:30pm / 4-11F 10am-8pm / 12-14F "ABENO HARUKAS Dining" Restaurant Arcade 11am-11pm / B2F "ABENO Ichiba Restaurant" 10am-10pm 🚶 Jan 1st Just outside the West Ticket Gate of Tennoji Metro Sta. / 1-min walk from the Central Ticket Gate of JR Tennoji Sta. / Just outside the West Ticket Gate of Kintetsu Osaka-Abenobashi Sta.

| Services offered |



TAKASHIMAYA OSAKA STORE

[大阪タカシマヤ]

www.takashimaya-global.com/
en/stores/osaka/



🏠 5-1-5 Namba, Chuo-ku, Osaka-shi, Osaka
☎ +81- (0) 6-6631-1101 ⌚ 10am-8pm
(until 8:30pm on Fri & Sat) / Namba Dining
Maison 11am-11pm 📅 Jan 1st 📍 Directly
connected to Namba Sta. (Municipal
Subway, Nankai lines) / 7-min walk from
Osaka-Namba Sta. (Hanshin, Kintetsu lines)

| Services offered |



Our newly-introduced
"YouCam Makeup"
application enables
you to find the colors
which suit you. If you
find something you
like, you can also buy
it through here.



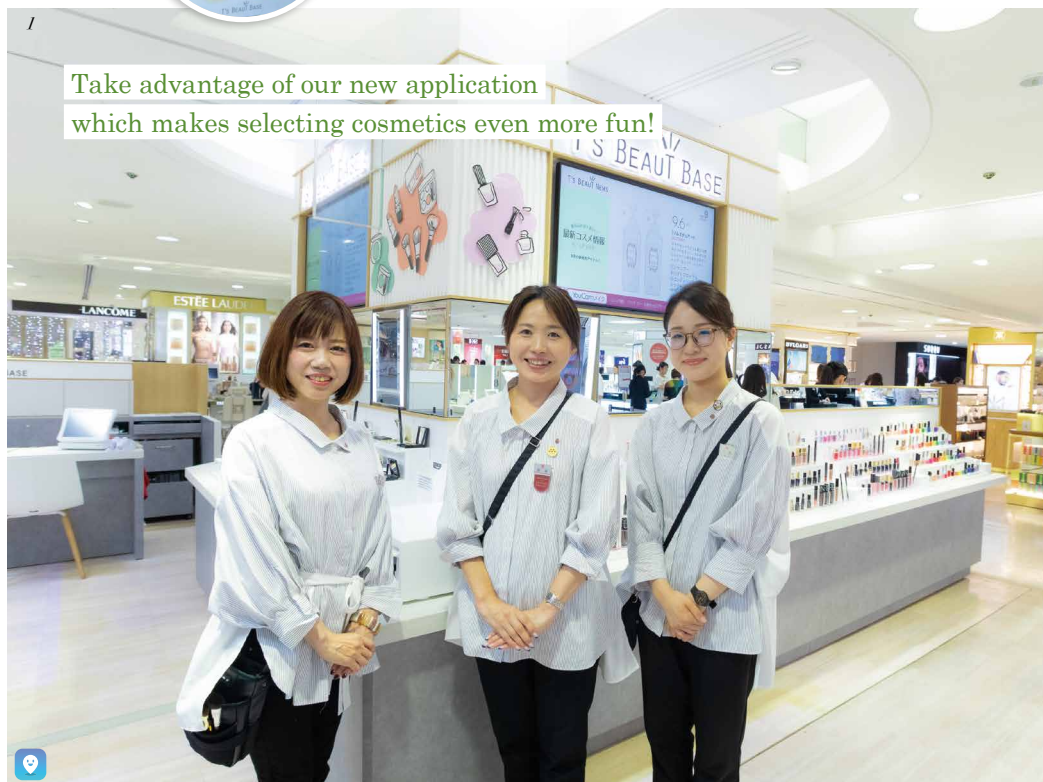
Your chance to encounter Japanese items proudly gaining popularity both at home and abroad.

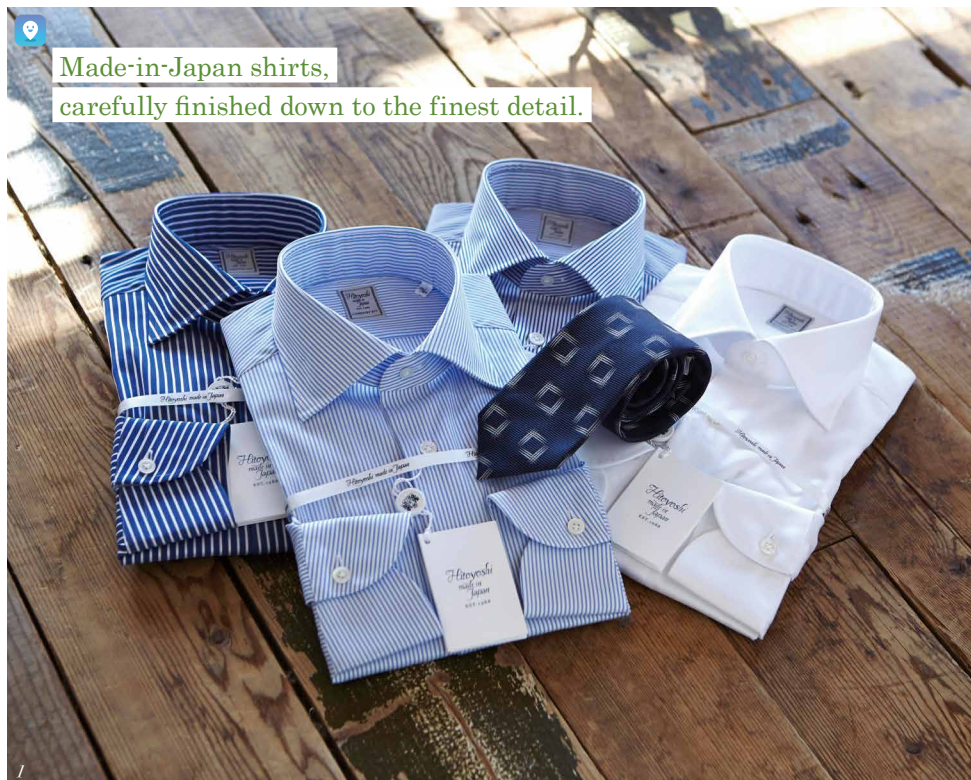
Our 1F cosmetics section general counter "T's Beaut Base", at which you are welcome to test both domestic and international brands, has just been renovated, and reopened in September 2019. With over 200 different-colored lipstick stands on display, you can freely enjoy selecting your desired cosmetics. Elsewhere, the 6F's kimono section contains many items which make for perfect souvenirs, such as Japanese trinkets.

1. We can offer you a make-up space and a monthly ranking of popular items. 2. These dolls of a vest-clad Billiken, the god of happiness, are exclusive to Osaka Takashimaya (6,600 yen for a small-size). 3. The kimono section with its Japanese sundries including hand towels and hand mirrors. 4. Only a short distance from all lines at Namba Station.



Take advantage of our new application which makes selecting cosmetics even more fun!





Made-in-Japan shirts,
carefully finished down to the finest detail.



1. HITOYOSHI's shirts are made entirely in-house and sewn together stitch-by-stitch via the delicate techniques of master craftsmen. 2. The GARAGE D.EDIT select shop gathers the latest Japanese and international fashions. 3. Easily accessible from Hankyu Osaka-Umeda Station, JR Osaka Station and all lines at Umeda Station.

The largest men's fashion specialty store in Japan

Our overwhelming product selection comprises specialty fashion items and cutting-edge brands hand-picked from across the world. We offer both a genuine fashion experience and a fun environment for men to polish their image. English interpreters are permanently stationed at our 1F Information Desk, at which you can also complete the tax-free shopping process.

Umeda / 梅田

Hankyu Men's Osaka

[阪急メンズ大阪]

www.hankyu-dept.co.jp/mens/english/index.html



🏠 7-10 Kakuda-cho, Kita-ku, Osaka-shi, Osaka ☎ +81-(0)6-6361-1381
⌚ 11am-8pm (Mon & Tue) / 11am-9pm (Wed-Fri) / 10am-9pm (Sat) / 10am-8pm (Sun & Holidays) 🗓 Jan 1st 🚶 4-min walk from Hankyu Osaka-Umeda Sta. / 4-min walk from Midosuji Exit of JR Osaka Sta.

| Services offered |



With an assortment of ceramics that were popular in the Netherlands, and much more!

Our long-standing department store is comprised of four buildings: Main, East, New-S and Wing. Our ceramics section on the Main Building 5F contains Amakusa Ceramics from the Amakusa region in Kumamoto Prefecture which are now designated as Traditional Japanese Craft Products. Our large assortment of Amakusa Ceramics includes Takahamayaki, originally developed 400 years ago for export to the Netherlands.

Kumamoto / 熊本

Tsuruya Department Store

[鶴屋百貨店]

www.tsuruya-dept.co.jp/



6-1 Tetorihoncho, Chuo-ku, Kumamoto-shi, Kumamoto ☎ +81- (0)96-356-2111
 10am-7pm / Fri & Sat 10am-7:30pm / New-S 10:30am-8pm 🗓 Irregular Tuesdays 🚶 1-min walk from Kumamoto City Tram Torichosuji Sta.

| Services offered |



Six renowned Kumamoto flowers decorate your dining table



1. The artwork for this "Higo Rokka" small plate set (1,980 yen for 6) collectively depicts six types of renowned Kumamoto flower. 2. This set of Hashioki chopstick rests (2,750 yen for 6) also collectively depict Kumamoto's six historic "Higo Rokka" flowers. 3. We are Kumamoto's leading department store.

BRICKS supports you when you have troubles on your trip in Japan.



Tel:050-3816-2787

Please call us at time of disaster or emergency to get information.

Service Languages: English, Chinese & Korean
 Charge: free

*We will give the latest information on emergencies such as typhoons, earthquakes, etc. This includes information on evacuation, weather (typhoons), transportation, etc.

JNTO Japan Visitor Hotline [In association with: Japan National Tourism Association]



Tel: 03-6626-0565

Please give a phone call when you need interpretation for shopping etc. We give you interpretation supports.
 Service Languages: English, Chinese & Korean
 Charge: free

Available: until December 31, 2020

*When you need Japanese interpretation, please give us a call and pass your phone to a staff, then we interpret conversation.

Department Hotline [In association with: Japan Department Stores Association]

We provide multilingual supports to accomplish our mission, connecting hearts to hearts.



BRICKS.

Contact: : TEL:03-5366-6018 E-mail: bricks_inquiry@bricks-corp.com

2020.03.14 Grand Re-Opening!

<https://kmtc.jp/>





京都伝統産業ミュージアム Kyoto Museum of Crafts and Design



B1F Miyakomesse, 9-1, OkazakiSeishoji-cho,
Sakyo-ku, Kyoto-shi, 606-8343, Japan

Tel : +81-75-762-2670 / Fax : +81-75-761-7121

  @kyotomuseumofcraftsanddesign

●By Buses

From

Kyoto Sta.(Japan Railway)City bus 5.100

Kawaramachi Sta.(Hankyu Railway)City bus 5.32.46

Gion-Shijo Sta.(Keihan Railway)City bus 46

Sanjo Sta.(Keihan Railway)City bus 5

●By Subway

"Higashiyama Nijo,Okazaki Koen-guchi" stop or

"Okazaki Koen/Bijutsukan,Heian Jingu-mae" stop or

"Okazaki Koen/ROHM Theatre,Miyakomesse" stop





JCB PLAZA



JCB PLAZA Tokyo

JCB PLAZA Kyoto



JCB PLAZA Tokyo and JCB PLAZA Kyoto offer many services for JCB cardmembers visiting Japan from abroad, including making reservations and providing sightseeing information in English, Chinese and Japanese. Enjoy free use of computers and internet, free Wi-Fi and free charging for mobile devices. Guidebooks and information magazines are available for you to read. We also offer a complimentary one-day luggage storage service.



일본을 여행하는 JCB카드 회원들을 위하여 각종 안내 및 예약 서비스를 한국어로 제공하여 드립니다. 또한, PC 및 인터넷 무료 이용 서비스, Wi-Fi 무료 이용 서비스, 휴대전화 무료 충전 서비스도 제공하고 있으며 각종 안내책자도 준비되어 있으므로 편안하게 언제든지 이용하여 주시기 바랍니다.



JCB PLAZA Tokyo และ JCB PLAZA Kyoto มีบริการมากมายสำหรับลูกค้าที่ถือบัตร JCB และเดินทางมาประเทศญี่ปุ่น ทั้งการจองร้านอาหารและบริการต่างๆ การแนะนำข้อมูลการท่องเที่ยวเป็นภาษาอังกฤษ จีน และญี่ปุ่น คุณสามารถใช้คอมพิวเตอร์และอินเทอร์เน็ตฟรี Wi-Fi ฟรี และชาร์จอุปกรณ์มือถือฟรี และเรายังมีบริการหนังสือแนะนำเที่ยวและข้อมูลต่างๆ จากนิตยสาร นอกจากนี้ยังมีบริการรับฝากสัมภาระฟรีในวันเดียว



JCB Japan Guide App



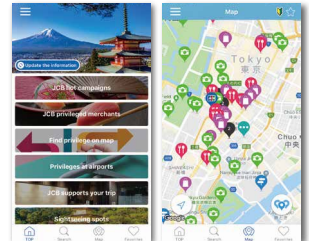
Find the nearby privileged shops from
1,000+ shop list that offer maximum **30% discount**.



주변 검색기능으로 최대 **30% 할인** 등 **1,000점포** 이상 JCB 우대
가맹점을 만날 수 있습니다.



ค้นหาสิทธิพิเศษจากร้านค้าใกล้เคียงกว่า
1,000 แห่งได้ง่ายๆ พร้อมรับส่วนลดสูงสุดถึง **30%**



Restaurant



Shopping



Leisure

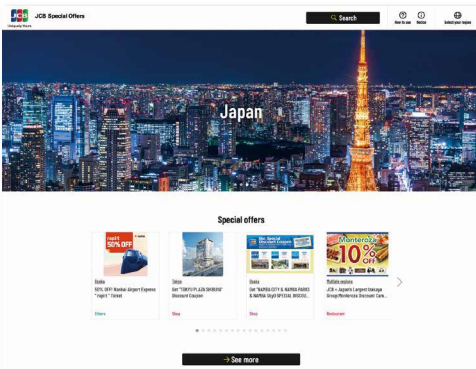


Relaxation



Entertainment

JCB Special Offers Web



"JCB Special Offers" provides information of special offers in your home country and when you travel abroad as well as recommended merchants.



세계 여러 나라와 지역에 퍼져있는 모든 가맹점 안내는 물론 일상
쇼핑에서부터 국내외 여행에 이르기까지 JCB 카드를 이용해 받을 수 있는
다양한 혜택과 추천 가맹점을 소개해드리는 서비스입니다.



在หน้า JCB Special Offers

มีข้อมูลร้านค้าแนะนำที่ลูกค้าจะได้รับสิทธิพิเศษเมื่อใช้บัตรเครดิต
JCB ทั้งในประเทศ และเมื่อเดินทางไปท่องเที่ยวต่างประเทศ
 อีกทั้ง ยังมีบล็อกข้อมูลสถานที่ท่องเที่ยว
 และข่าวสารล่าสุดที่เขียนโดยเจ้าหน้าที่ JCB





日本百貨店協会

<http://www.departinfo.com/>

わたしたちは日本の百貨店を応援します！

日本でのお買い物はぜひ百貨店で！



SUMITOMO MITSUI
CARD



JAPAN AIRLINES

NTT
docomo



BRICKS.



Global Blue

TAKANO

SHINJUKU TOKYO
SINCE 1885



YOKU MOKU

Gift

「葛飾北斎 あぶらとり紙」 プレゼントキャンペーン

期間中（各店休業日を除きます）、本誌を持参いただき、掲載している百貨店に行くと一定額以上お買い物いただいたお客様に「葛飾北斎 あぶらとり紙」をプレゼントいたします。日本でのショッピングの記念に、ぜひお持ち帰りください。

期間 2020年12月31日まで

※数に限りがございますので、詳しくは、百貨店免税手続きカウンターまたは総合受付等にてお問い合わせください。なくなり次第終了となります。



Size : 102mm×101mm
葛飾北斎／富嶽三十六景 凱風快晴

©(公財)アダチ伝統木版画技術保存財団／
amanamages



日本の百貨店のお得な情報は QR コードをスキャンしてください

Translation: Chris Gould